

Theory of Change



HOME REGION PROGRAM: ARKANSAS-MISSISSIPPI DELTA

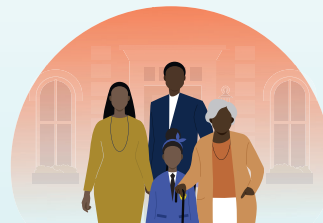
The Delta region holds enormous potential, but has experienced generations of underinvestment and systemic barriers to opportunity. All Delta residents deserve access to the resources they need to learn, build assets and lead in their communities.

Through 2030, the Home Region Program will invest in initiatives that ensure all students have access to a high-quality education, help residents build assets and economic mobility and strengthen the capacity of local leaders and community-driven solutions.

What we plan to do



Ensure youth have access to high-quality education that enables pathways to economic mobility.



Support residents in building and retaining economic assets over time.

How we plan to do it



Improve teacher quality through certification and professional development aligned with strong instructional materials.



Expand access to career-connected pathways, after-school programs and quality public charter schools.



Help individuals and families build credit and financial literacy and access pathways to home ownership.



Provide sector-specific workforce training, build partnerships between employers and educators and strengthen small business resiliency and job creation.

All initiative areas are supported by investments in coalition-building and strengthening the capacity of local leaders and organizations to sustain and scale impact.

Why we do it



Access to a quality education is an essential building block to economic mobility. In the Delta, a lack of quality instruction and limited school options hinder students from realizing their full potential.



Generational poverty and disinvestment in the Delta have made it difficult for residents to accumulate wealth. Home ownership, financial literacy and small business success are foundational to resilient families and communities.

