



2017 Annual Report

Walton Family Foundation: Where Opportunity Takes Root



CONTENTS

INTRODUCTION	5
• Board Members	6
• Hope Grows from Collaboration	7
• Our Values	8
• A Message from Executive Director Kyle Peterson	9
2017 GRANTS	10
OUR IMPACT	12
• 30 Years of Impact	13
• Milestones	14
ENVIRONMENT	16
• Sustaining a Healthy Environment and Healthy Communities	17
• Building Partnerships to Restore the Gulf Coast and Sustain Fishing Families	18
• Two Nations, One River: Restoring the Colorado River Delta	20
HOME REGION	22
• Rooted in a Legacy of Giving	23
• Promoting New Artists, Engaging New Audiences in Northwest Arkansas	24
• Celebrating a Perfect Grade on College Acceptance at Central High	26
K-12 EDUCATION	28
• Helping Today's Students Achieve a Better Tomorrow	29
• Innovation in Indianapolis Builds Stronger Schools	30
• New Orleans School Aims to Put Students on Fast Track to Flourish in College and Career	32
2017 GRANTS REPORT	34



30 Years of Collaboration



Where Opportunity Takes Root

The Walton Family Foundation is, at its core, a family-led foundation. The children and grandchildren of our founders, Sam and Helen Walton, lead the foundation and create access to opportunity for people and communities. We work in three areas: improving K-12 education, protecting rivers and oceans and the communities they support, and investing in our home region of Northwest Arkansas and the Arkansas-Mississippi Delta.

Board of Directors



Carrie Walton Penner
BOARD CHAIR



Alice Walton
BOARD MEMBER



Rob Walton
BOARD MEMBER



Lukas Walton
BOARD MEMBER



James Walton
BOARD MEMBER

Hope Grows from Collaboration

By Carrie Walton Penner, Board Chair



Thirty years ago, my grandparents started the Walton Family Foundation to encourage our family to come together to give back. A lot has changed over the past three decades – the foundation has grown and so has our family. Social and environmental problems intensify daily, and we live in a time of increasing uncertainty and decreasing trust. Our desire to create access to opportunity for people and communities is now more important than ever.

For the Walton Family Foundation, what remain the same are the timeless values that inspired my grandparents. They envisioned a world where people can accomplish anything with opportunity and encouragement. The challenges have grown along with our commitment to making this vision a reality.

Creating Benefits for People and Nature

In our Environment Program, years of hard work to ensure healthy oceans, rivers and coasts are fulfilling our commitment to be responsible stewards of our natural resources and creating benefits for people and nature. The passage last year of a new Coastal Master Plan in Louisiana will guide the restoration of wetlands that are now disappearing at an alarming rate. We are proud to have supported binational cooperation between public and private partners that produced a 2017 U.S.-Mexico agreement on stewardship of the Colorado River, which will help provide water security for 40 million people in the West. Internationally, countries such as Indonesia, Japan, the United States and others are working together to eliminate the global scourge of illegal, unreported and unregulated fishing.

Increasing Access to High-Quality Schools

Foundation support for quality K-12 education options has helped hundreds of thousands of students gain access to better schools that provide the building blocks for successful lives. But so much more needs to be done. It's why the foundation has invested in purposeful partnerships that are transforming education in communities across the nation.

We've seen tremendous progress in cities like Indianapolis, which has invested in achievement by creating Innovation Network Schools that give educators more autonomy to meet students' needs. In New Orleans, bold ideas from education entrepreneurs like Jonathan Johnson, founder of Rooted School, are putting underserved students on a path out of poverty by preparing them for the jobs of the future.

Planting Seeds of Opportunity in our Home Region

The foundation's history runs deepest in our home region, where hope grows from collaboration at the grassroots level. Early grants helped establish cultural landmarks such as the Walton Arts Center and introduced new high-quality education options such as KIPP Delta. Today, we remain committed to planting seeds of opportunity throughout Northwest Arkansas and the Delta region of Mississippi and Arkansas. We see the impact in Springdale, Arkansas, where the foundation supports young Latino artists to showcase the diversity of arts and cultural talent. And we see it in Helena-West Helena, Arkansas, where a unique college-preparation program reports helping 100 percent of graduating seniors at Central High get accepted to a post-secondary institution for the first time in the school's history.

None of these stories would be possible without the dedication of our grantees and staff, who every day carry out the mission of the foundation and are the ambassadors for its vision and values.

The Values Guiding Our Work

Our 30th anniversary was a moment to both reflect and look forward. In 2017, as a family and a foundation, we articulated the values that have guided our work to date. To stay rooted in a family tradition of giving and in the communities where we work. To be active partners with our grantees in identifying challenges and developing solutions and to base those solutions on helping people and communities have an active role in their futures. To tackle issues with a steady, long-term view to bringing change that lasts.

We also committed ourselves to a culture that fosters bold and sometimes unconventional thinking and to be more open about who we are and what we do – and to new ideas about how to solve big problems.

These recently defined values will guide us in the near-term as we evaluate the outcomes of a five-year strategic plan that concludes in 2020 and as we begin to plan for the next five years and beyond.

In life, change is constant. Each day brings new challenges and new problems to solve.

As we head into the foundation's next 30 years, one thing will not change – our commitment to tackling those challenges with immediacy and resolve.

Our Values

Rooted

"Mom and Dad saw the foundation as a way to teach us how to give and how to work together."

ALICE WALTON

Active

"The opportunity to be on the ground – to meet people, to put roots to these concepts – is so important."

BEN WALTON

Steady

"We have patience – whether it is five years, 10 years, 20 or 30 years – to find the real solutions."

CARRIE WALTON
PENNER

Bold

"What if you planted a flag in the ground and stood for something that would be unique and different?"

TOM WALTON

Open

"The best ideas can come from anywhere, so we want to stay open to new thinking from all over."

LUKAS WALTON

A Message from Executive Director Kyle Peterson



Helen Walton had a favorite saying: 'It's not what you gather in life. It's what you scatter that tells the kind of life you have lived.'

That spirit of giving has guided the Walton Family Foundation in its philanthropy over the past three decades.

Our vision is to live in a world where people can accomplish anything when they have opportunity and encouragement.

Last year marked our 30th birthday. We spent some time reflecting on what we have achieved and how this organization has changed and matured over the years.

But mostly, we remained focused on the hard work of carrying out our mission: tackling tough social and environmental problems with urgency and patience.

Before I joined the foundation, I spent my whole life in the social sector, starting as a Peace Corps Volunteer and including many years as a grantee.

I've worked with many foundations. This one is special because of the family's direct involvement and commitment to doing good.

We benefit from three decades of family experience in philanthropy. And as younger family members become involved, they are giving the foundation the fresh energy of a startup.

The challenges we're confronting are big ones:

To create opportunity for every child to access great schools.

To ensure healthy oceans and rivers for people, communities and the environment.

And to raise the quality of life across our foundation's home region – in Northwest Arkansas and the Mississippi and Arkansas Delta.

We are halfway to completing our five-year strategic plans for each of the foundation's programs. It is never easy, but the good news is that there is momentum towards our goals in each area.

In our environmental work, we have made significant progress towards water security in the Colorado River basin, improving water quality in the Mississippi River, restoring wetlands along the Gulf Coast and sustaining healthy oceans and prosperous fisheries.

In our K-12 program, we are encouraged by bold new partnerships that are providing students with more options for high-quality education in both district and charter schools in cities across the country.

And in our Home Region, our investments are helping revive downtowns across Northwest Arkansas and producing new arts and educational opportunities for youth and students in the Delta.

None of these successes are possible without collaboration, a hallmark of how I think about effective philanthropy.

As a grantmaker, our greatest contribution comes often by acting as conveners – creating unique partnerships to solve big problems.

Ranchers, farmers and fisherman, working hand in hand with conservationists.

Innovators and entrepreneurs from across all sectors of education, co-operating to ensure high-quality school options for every student.

Cyclists and city planners in our Home Region, working together on a world-class trail system in our Home Region.

Whether we offer inspiration, or research, or resources, the foundation's aim is to give our partners the time and space to put good ideas into action.

As a philanthropy with local, national and global reach, it is critical that we listen to those closest to the problems and represent the interests of the people we are trying to serve. We pledge to be active partners and inclusive in everything we do. And like any family and organization, we can always do better.

So, now more ever, we are committed to being more open. We aim to increase awareness and understanding of what we do – and why we do it.

Stay rooted in our values. Remain steady in our approach to creating change. Be bold in our solutions. Learn from our successes and our failures.

In all of our work, we aspire to live up the ideals of Sam and Helen Walton and the ideas of all family members.

We invite you inside our offices, on a beautiful river, on a farm in Indiana, or a school in Washington D.C., to discover where opportunity takes root.

A close-up photograph of a student's hands and arms. The student is wearing a red zip-up hoodie and is holding a yellow pencil, writing on a piece of paper on a desk. The background is blurred, showing other students in a classroom setting. A vertical white line runs down the center of the image, and a horizontal orange line is positioned below the text.

2017 GRANTS



2017 Grants

\$535.5 million in grants awarded in 2017.

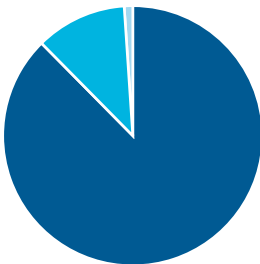
- K-12 Education (\$192.7 million)
- Environment (\$86 million)
- Home Region (\$59.9 million)
- Special Projects (\$196.9 million)

Giving by Program



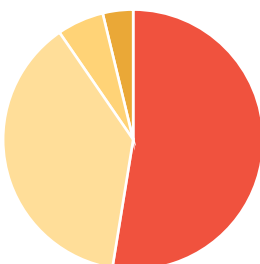
Environment: \$86 million

- Oceans (\$38.5 million)
- Colorado River (\$21.5 million)
- Mississippi River (\$12 million)
- Coastal Conservation (\$12 million)
- Innovation & Research (\$2 million)



Home Region: \$59.9 million

- Northwest Arkansas (\$52.5 million)
- Delta Region (\$6.8 million)
- Research and Evaluation (\$0.6 million)



K-12 Education: \$192.7 million

- Investing in Cities (\$100.9 million)
- High-Quality Schools (\$73.8 million)
- Innovation (\$11 million)
- Research & Evaluation (\$7 million)



OUR IMPACT

30 Years of Impact

No one ever solved big problems by thinking small. Creating lasting change in society requires leaders driven by a spirit of innovation, a curiosity to explore what is possible and an urgent willingness to be bold where others are cautious. It's how we seed success – it's how opportunity takes root.

2,235

School Startup Grants awarded

164

miles of Northwest Arkansas trails built

300

fisheries certified as sustainable
over the past 20 years

6.2 billion

total grantmaking since 1987

6,297

grantees since 1987

3.5 million

acres of farmland under more
sustainable agriculture practices in 2017

\$137 million

in economic benefits from bicycling in
Northwest Arkansas in 2017

85,000

acres of bottomland hardwood forests
restored since 2009 in lower Mississippi
River basin

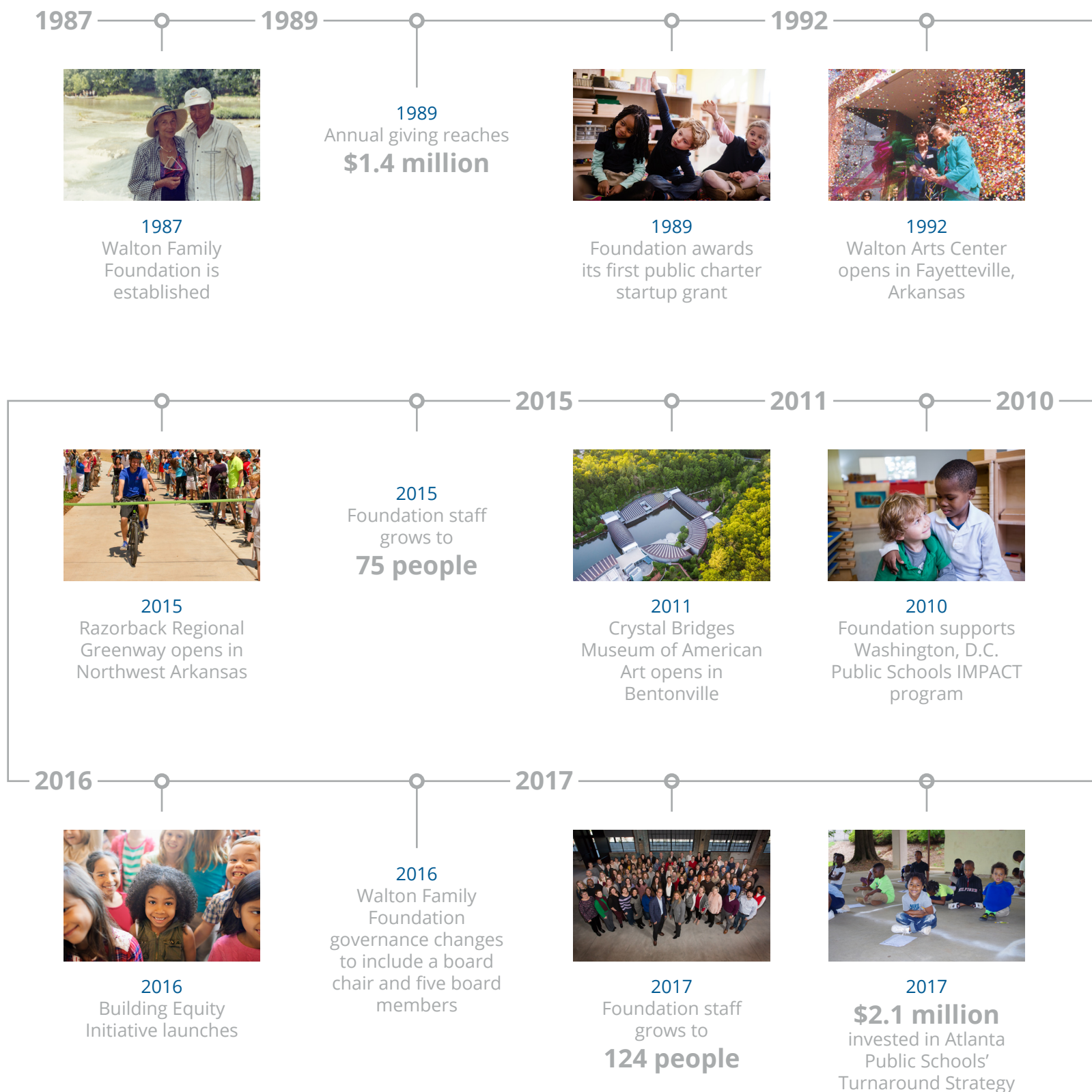
3.7 million

Visitors to Crystal Bridges Museum
of American Art since 2011

50%

of New Orleans charter schools have
significantly more positive reading gains
than district peers

Milestones



1998



1998

Children's Scholarship Fund is launched

1998
Annual giving surpasses
\$50 million

2002



2002

KIPP Delta opens its first school in Helena-West Helena, Arkansas

2003

2003
Annual giving exceeds
\$100 million

2009



2009

First grant to a school district – Denver Public Schools – for high-quality schools



2007

First mountain bike trails are built in Bentonville, Arkansas.

2007



2006

Annual giving reaches
\$200 million

2006



2005

\$5.1 million
grant awarded to Marine Stewardship Council

2005

2017

The Louisiana Coastal Master Plan is Approved



2017

Mexico, U.S. sign Minute 323, a new Colorado River water use agreement

2017

Annual giving exceeds
\$500 million

A man in a blue shirt, tan vest, and cap is fly fishing in a river. He is holding a fishing rod that is bent, indicating a catch. The river is surrounded by lush green vegetation and a rocky hillside in the background. The word "ENVIRONMENT" is overlaid in white text with a green underline.

ENVIRONMENT

Sustaining a Healthy Environment and Healthy Communities

By Barry Gold, Environment Program Director



At the Walton Family Foundation, we are working on finding solutions that sustain a healthy environment and healthy communities. We know real change comes through collaboration and that environmental solutions that make economic sense are the ones that will stand the test of time.

The past year marked a milestone in the foundation's efforts – along with local partners – to advance meaningful restoration projects along the Gulf Coast, where wetlands loss in the Mississippi River Delta poses an existential threat to the people of Louisiana, the Port of New Orleans and the health of the Gulf of Mexico.

Louisiana's passage of an updated \$50 billion Coastal Master Plan was a critical turning point. The plan, backed by a broad coalition of coastal stakeholders, includes projects for Mississippi River sediment diversions that have the potential to rebuild wetlands at the scale needed to protect the region.

In the Colorado River basin, the foundation supports market-based conservation solutions to address over-allocation of water that threatens the health of the Colorado River ecosystem and the water supply for almost 40 million people who depend on the river every day for drinking water, agriculture, industry and recreation.

Last year, we celebrated a new nine-year agreement between the United States and Mexico on how to manage the Colorado River's water. The deal will increase water security for users in both countries and help restore the Colorado River delta.

It is a model for collaboration, involving partnerships among the United States, Mexico, seven states throughout the Colorado River basin, water users and managers, non-profit organizations and philanthropy.

In the Mississippi River Basin, the foundation works with partners to improve water quality with the intention of protecting the health of the ecosystem, drinking water and shrinking the dead zone in the Gulf of Mexico. To do this we are seeking to change farming practices on 10 million acres of agricultural land by 2020.

In 2017, we estimate more sustainable agricultural practices were implemented on over 3.5 million acres of farmland. At the same time, private landowners, government agencies and conservation organizations in Louisiana, Mississippi and Arkansas celebrated the restoration of more than 700,000 acres of marginal farmland to wetlands and bottomland hardwood forests over the past 25 years. The foundation directly helped restore more than 85,000 of those acres.

Our oceans conservation work focuses on building healthy, sustainable fisheries across the Americas – the U.S., Mexico, Peru and Chile – and Indonesia to contribute to healthy oceans and provide sustainable livelihoods in healthy communities. Collectively these five countries account for 25% of the fish caught in the world. At the same time, we work in the U.S., Japan and Spain to create demand for sustainable seafood. Japan's ratification in 2017 of the Port State Measures Agreement, an international treaty aimed at eliminating illegal fishing, was a significant step toward global seafood sustainability.

We believe that we should use the natural resources of the planet responsibly, so the benefits of healthy ecosystems are available for current and future generations. The progress we're making toward a more sustainable future is exciting – and it's being made possible through collaboration among diverse coalitions.

Building Partnerships to Restore the Gulf Coast and Sustain Fishing Families

Sandy Nguyen works to protect fishing communities at risk from wetlands loss



When Sandy Nguyen was growing up along the Gulf Coast in the 1990s, she remembers playing football on an open field in the fishing community of Buras, Louisiana, near the marina where her father would dock his shrimp boat.

"It was beautiful," she says. "There was lots of land everywhere."

Today, that land is gone and water laps at the edge of a levee protecting a state highway and the homes of fishing families – many of them Vietnamese, Cambodian and Laotian immigrants – who earn their living in the coastal waters.

"The land has eroded," says Sandy. "We have a dire situation. We're losing land too fast."

Over the past 13 years, commercial fishing communities along the Louisiana coast have been battered by a series of disasters that threaten a livelihood which depends on a healthy coastal ecosystem.

Hurricanes Katrina and Rita, in 2005, wreaked havoc on the wetlands that form a protective barrier around southern Louisiana and provide rich natural habitat for oysters, shrimp, crabs and other species. Hurricanes Ike and Gustav in 2008, and Isaac in 2012, further

accelerated the loss of marshes and swamps that have been steadily disappearing since the channelization of the Mississippi River. The Gulf oil spill dealt another devastating blow.



For Sandy, executive director of the nonprofit Coastal Communities Consulting, the future of Louisiana's commercial fishery depends on restoration of wetlands. Her organization works to ensure that fishers – who bear the brunt of natural disasters and rising sea levels – have a seat at the table as decisions are being made about long-term solutions to protect the Gulf.



"I don't think anybody can rebuild this coast with more heart than our fishermen," she says. "They have been resilient all their lives."

Over the past 80 years, an area roughly the size of the state of Delaware has disappeared from Louisiana's shores.

The state's passage in 2017 of an updated \$50-billion Coastal Master plan holds the biggest promise to rebuild land that protects not only small fishing villages but the city of New Orleans and 10 of the country's largest shipping ports.



Restoration comes with risk and opportunity for the fishing community.

Louisiana's plan includes several large-scale sediment diversion projects, which would reconnect the Mississippi to its Delta and restore marshlands. The projects are likely to impact the fishery – particularly oysters and brown shrimp – by introducing freshwater and altering the salinity of existing wetlands. Doing nothing, though, will lead to unmanaged impacts as further land is lost.

As these diversions are approved, Sandy says fishers will need help to ease the transition and adapt to changes in the fishery that might require new licenses, different gear, longer trips and better on-boat storage.

The industry also needs to understand the solid science underpinning the master plan and learn more about potential impacts, Sandy says. As restoration projects accelerate, fishers will also need access to jobs created by the work.

"I don't think anybody can rebuild this coast with more heart than our fishermen."

SANDY NGUYEN, EXECUTIVE DIRECTOR OF COSTAL COMMUNITIES CONSULTING

"Anybody will tell you here that the fishermen support coastal restoration," says Sandy, whose father was a fisherman. She is also married to a fisherman.

Sandy says the key is collaboration through effective coalitions – between fishers, government, conservation groups and funders.

The Walton Family Foundation provides funding to Coastal Communities Consulting to foster understanding between the official coastal restoration process and fishing communities. This includes translation services and stakeholder meetings in support of developing plans to sustain the fishing industry and communities as the state's master plan is implemented. One of the potential tools is a loan fund for impacted fishers.

For Sandy, coastal restoration is critical to protect communities from the environmental threats of disappearing wetlands. But it's also vital for sustaining hard-working families, who are the small business heart of the coast.

"It's husbands, wives, sons, dads, moms. Fishing is their only source of income," she says. "It's not a get rich business, but if you do it right you live a comfortable life."

Two Nations, One River: Restoring the Colorado River Delta

In 2017, cross-border collaboration produced a good deal for the river and its people



When Yamilett Carrillo moved to the Colorado River delta almost two decades ago, the water had been gone for so long that no one really believed it would flow again.



"There was dry riverbed. Salt crust on the soil. Salt cedar trees everywhere. The delta was a barren, desolate area," she says. "It was a dead river in the minds of every Mexican and in the local communities."

Today that's changing, thanks to ongoing collaboration between the United States and Mexico that will deliver more water to the parched delta, restoring flows and supporting restored riparian habitat areas.

In 2017, the two countries struck a nine-year deal, known as Minute 323, to increase water security for Colorado River users on both sides of the border. The agreement provides at least 210,000 acre-feet of water for ongoing restoration in the delta, supporting local economies and improving habitat for vegetation and wildlife that can thrive even with small increases in water supply.

"I love seeing the joy that the river brings people - the happiness it brings a community."

YAMILETT CARRILLO

The signing of Minute 323 was a big win for the Colorado River, which faces an annual water deficit that threatens supply to almost 40 million people. It also marked a major breakthrough for conservationists like Yamilett, who serves as executive director of Mexico-based Restauremos el Colorado, a binational water trust created to secure more water for the environment in the delta.



Restauremos was among several nonprofit groups and philanthropic foundations – including the Walton Family Foundation – active in the binational negotiations to ensure the U.S.-Mexico deal included an environmental component for the delta, the 100-mile section of the river in northwestern Mexico, below the Morelos Dam on the Arizona border.

The delta had been in decline for much of the 20th century following the construction of the Hoover Dam in the 1930s, and then the Glen Canyon Dam from 1956 to 1966.

Riparian forests of cottonwoods, willows and mesquite, as well as marsh and estuarine wetlands, once thrived across about 2 million acres of the delta, but now cover a fraction of that area.



While a binational treaty guaranteed Mexico 1.5 million acre-feet of water each year, almost all of it is diverted for agriculture and industrial use. Most years, the Colorado River dries up before reaching its natural destination in the Sea of Cortez.

Yamilett is determined to bring the river back alive. Since 2008, Restauremos has been purchasing water rights at market price from farmers in Mexico. Water, once used to grow wheat or cotton, is now restoring wetlands and supporting instream river flows.

“When I began this work, nobody thought about the possibility of relocating or reassigning water rights to the river,” she says. “But it has been very successful. Restauremos is not only seen as an environmental organization, we are also water managers. We are proving that a river can be restored – and one way to do it is through water markets.”

As riparian habitat is restored and flows increase, Delta residents have begun to see the promise of a restored Colorado River.

The optimism spiked with the 2014 ‘pulse flow,’ when 105,000 acre-feet of water was released into the river from the Morelos Dam. The flow revived habitat and stirred the imagination of residents, as well as observers from around the globe, who had never seen the river run.

“That’s when we proved to local communities that the river can come back and it was worth working for the river,” Yamilett says.

Under Minute 323, many philanthropic organizations, including the Walton Family Foundation, and NGOs will share, with the U.S. and Mexican federal governments, the cost of the delta restoration work and the water needed for restoration.

“We provide opportunities for recreation. We provide jobs in restoration that support the livelihood of people in local communities,” Yamilett says.

“I love seeing the joy that the river brings people – the happiness it brings a community. While we can’t restore the whole river to its free-flowing years, we can have some very important areas for habitat, for wildlife and local communities for recreation. It’s inspiring.”

A person wearing a blue shirt, black shorts, a white helmet, and knee pads is riding a teal mountain bike through a forest. The background is filled with trees and foliage in shades of green and yellow, suggesting an autumn setting. The image has a motion blur effect, particularly on the wheels and the background, giving a sense of speed. A vertical white line runs down the center of the image, and a horizontal blue line is positioned below the text.

HOME REGION

Rooted in a Legacy of Giving

By Karen Minkel, Home Region Program Director



The foundation's roots in Northwest Arkansas and the Delta region of Arkansas and Mississippi run deep. We invest in bold ideas that improve quality of life and generate economic opportunity for their residents.

In Northwest Arkansas, the foundation's steady support for arts and culture, education, entrepreneurship and urban design has played an important role in preserving the region's unique sense of place.

For three straight years, U.S. News & World Report has ranked Northwest Arkansas as one of the top five places to live, while Outside magazine included Bentonville in its Best Towns list of 2017.

This has confirmed that Northwest Arkansas has unlimited potential – and reinforced our commitment to the core strategies that guide our philanthropy.

For the past decade, the foundation has worked to enhance the region's distinctive natural and built environment, improve water quality and create an extensive network of natural-surface trails and paved paths. Over the past five years, the foundation has preserved more than 1,700 acres of green space and restored more than 18,000 feet of streambank.

Between 2012 and 2017, more than 77 miles of natural-surface trails and 35 miles of multi-purpose paved paths were built.

In 2017, bicycling generated \$137 million in economic benefits to Northwest Arkansas. Between 2015 and 2017, cyclist trail usage rose 24% and pedestrian trail usage jumped by 10%.

A foundation-commissioned report captured the impact we've helped achieve in Northwest Arkansas downtowns. It found they continue to see strong population growth and increased demand for residential and commercial development.

Our support for arts and culture has improved access and increased the diversity of the region's cultural ecosystem. The number of performances at key cultural institutions has risen by more than 30% over the past four years and attendance has doubled. Notably, Home Region's giving has targeted underrepresented audiences and supported organizations building partnerships with the growing Latinx community, rural residents and low-income populations.

Foundation investments have also supported an entrepreneurial culture in the region, which has seen an 8% increase in regional businesses. From 2012-2017, more than 600 jobs were created by businesses that worked with entrepreneurial support organizations funded by the foundation.

The foundation's investments in preschool and K-12 education are helping create a nationally competitive system of traditional district, public charter and independent schools. At four of six area public charter schools, students achieved stronger academic growth than the regional average. At Rogers Public Schools, the Rogers Honors Academy is helping students gain the skills and support needed for acceptance into top-ranked colleges.

In the Mississippi and Arkansas Delta, we are expanding high-quality Pre-K-12 school options, working to improve public safety and developing new opportunities for young people facing challenging economic circumstances.

Public charter school enrollment in the Delta has grown more than 30 percent in the last four years and the number of youth attending after-school programs in Coahoma County, Mississippi and Phillips County, Arkansas has increased since 2015. Organizations like Griot Arts, in Clarksdale, Mississippi, provide academic support and foster creativity through the arts.

The foundation is also supporting targeted job creation, working with Southern Bancorp Community Partners to provide much-needed capital to small businesses in the Delta and investing in cultural tourism through the Clarksdale Collective in Clarksdale, Mississippi.

Across Northwest Arkansas, and in the Delta, these achievements provide inspiration to continue working with community partners to build a prosperous future.

Promoting New Artists, Engaging New Audiences in Northwest Arkansas

The Latinx Theatre Project gives a new voice to the region's growing immigrant community



Before she joined the Latinx Theatre Project, Nicole 'Coco' Vasquez admits she never imagined herself performing on stage.

The 18-year-old student had taken an introductory drama class at her community college and last year auditioned with the new Springdale, Arkansas-based theater company, mostly out of curiosity.

The experience turned out to be transformative for Coco – igniting a passion for acting and writing. More than that, it provided her a lesson in the power of theater – to entertain, uplift, unite, enlighten and even provoke.

"I never really understood what was possible with theater until I got introduced to this group of young performers and I saw how art is really the soul of a community," says Coco.

As a founding member of the theatre company, Coco played a starring role in the creation of an arts organization aimed at reaching new, underserved audiences of color, primarily in Northwest Arkansas' growing Latino community.

The project began as creative collaboration with the NorthWest Arkansas Community College, prominent members of the local arts community, the Arts Center of the Ozarks and a Latino youth arts group, Stitches.





The idea was to create entertaining, culturally relevant theater that reflects the region's diversity and to engage young artists and performers.

Over six weeks in the spring of 2017, Coco and her fellow cast members collaborated with local playwright and theater professor Ashley Edwards to write their first original play, *Follow Me @TioSam*.

The play was an inspired piece of devised theater that tells the story of Latino youth – and the immigrant experience – using song, rap, poetry, drama and humor. It followed an undiscovered Latino artist who faces discrimination and hardships with family and focused on themes of cultural alienation, understanding and acceptance.

Follow Me @TioSam opened to enthusiastic audiences at the NorthWest Arkansas Community College's 2017 Spring Arts and Culture Festival in Bentonville.

The Arts Center of the Ozarks hosted two performances and the play was also staged at Crystal Bridges Museum of American Art. The group's 2017 season was capped with performances at TheatreSquared's Arkansas New Plays Festival in Fayetteville.

"I think what we're doing with the Latinx Theatre Project is really important, because a lot of people from the immigrant community never felt they were represented in theater until now. A lot of the plays don't involve anybody who looks like them," Coco says. "Just being given a chance to find our voice and tell our stories, in a welcoming environment, it was really beautiful. It gave us a type of acceptance that we wouldn't have otherwise."

The Walton Family Foundation provided funding for *Follow Me @TioSam* as part of its commitment to

"Just being given a chance to find our voice and tell our stories, in a welcoming environment, it was really beautiful."

NICOLE 'COCO' VASQUEZ

supporting artists and arts organizations in Northwest Arkansas with audiences that transcend ethnic, generational and socioeconomic boundaries.

"There are some incredibly compelling and underrepresented voices in our region and the opportunity to amplify them through art is really exciting," says Joe Randel, a senior program officer with the foundation. "The project shows how much talent exists in Northwest Arkansas and how supporting grassroots arts organizations can unlock that potential and help people tell important stories about their community."

Following the success of the first play, the foundation provided a second grant to help the Latinx Theatre Project begin the process of establishing itself as a permanent non-profit arts group. The company has held several additional community performances around Northwest Arkansas. It opened a second play, *Scratch That*, at several regional venues in the spring of 2018.

"There are so many stories we want to tell," Coco says. "I absolutely love the process."

Celebrating a Perfect Grade on College Acceptance at Central High

The Delta College Attainment Network helps put students on post-secondary path



"Congratulations to J'Tyia Thomas for being accepted to Arizona State University in Tempe, Arizona, University of Arkansas at Little Rock and The University of Memphis."

That celebratory message was posted on the morning of Nov. 17, 2017 to Central High's Facebook page – a recognition of student achievement that became a regular occurrence over the past year at the school, in Helena-West Helena, Arkansas.

For the first time in its history, every member of Central's graduating class – the Class of 2018 – was accepted to college. The accomplishment marked the realization of a goal not only for the students but also for the Delta College Attainment Network (DCAN).

Created by KIPP Delta Public Schools in partnership with the Helena-West Helena and Cross County School Districts and supported by the Walton Family Foundation, DCAN aims to increase college access and graduation rates for students in the Delta region.

The program places college advisors in each participating school to work individually with students beginning in their junior year. Advisors prepare students for admissions testing, provide college counseling and organize visits to in-state and out-of-state colleges and universities. They also help with scholarship applications and the financial aid process.

At Central High School, the DCAN collaboration is building bridges between the charter and traditional district school sectors. And it is paying off with a wealth of new opportunities for students like J'Tyia Thomas, who has received scholarships for academic excellence.

**"Once we realize our dreams,
we'll be able to come back to our
community and make a difference."**

J'TYIA THOMAS

"To be the first class here at Central High School to have 100% acceptance rate into college, I am excited about that. It feels good to be a part of it," she says. "Once we realize our dreams, we'll be able to come back to our community and make a difference."

In all, J'Tyia received more than a dozen college acceptance letters. She credits her advisor, Tomisha Gant, for guiding her through the process and making it easier to manage.



"Miss Tomisha has been more than a college advisor. She's been a friend," J'Tyia says. "She's loving and she gives tough love if you need it. She encourages you to stay in school, to apply for scholarships. She makes sure that you're on top of it and she lets you know your options if things don't go the way you plan them."

Tomisha, a Helena-West Helena native who graduated Central High in 2003, has been a college advisor for four years at the school.

Over that time, she says students have become more confident and optimistic about their chances of attending college, because they see their classmates' success.

"We have smart, exceptional students here, and we have a lot of potential that I don't think people really give us the credit for," Tomisha says.

Students respond to educators who respect them and believe in them, she says.

"Sometimes students just don't have anyone rooting for them. I feel like, well, if nobody else is going to do it, I will," she says.

One of the reasons Central High posts college acceptances to Facebook – and includes them in the school's morning announcements – is to send a message to younger students about what's possible through a commitment to education.

"A lot of our students are first-generation college students, so they're really breaking the cycle," Tomisha says. "Do I think more works needs to be done? Yes, but I think that what we're doing right now is exceptional."



A composite image of children playing on a playground. The image is split vertically. On the left, a girl in a blue hoodie and jeans stands on a green platform, holding onto a blue bar. In the center, a girl in a light blue t-shirt and black leggings hangs from a blue bar. On the right, a boy in a blue and black striped shirt runs towards the right. In the background, another boy in a green shirt is visible. The playground equipment is blue and green. The text 'K-12 EDUCATION' is overlaid in white, with a horizontal orange line underneath it.

K-12 EDUCATION

Helping Today's Students Achieve a Better Tomorrow

By Marc Sternberg, K-12 Education Program Director



Great schools led by great teachers can transform children's lives.

The foundation's K-12 Education program is guided by this fundamental belief. We embrace efforts to ensure all families can access high-quality school options, so that a great education — and the opportunities that enables — isn't just for the lucky few.

Sometimes the headwinds we face in this work are strong. But when we look broadly at the issues we are confronting, we see progress and cause for optimism.

Across the country, we are forging relationships with innovative education leaders to open new schools that prepare students for college and career success.

Charter schools are an important element of our work: Last year, a Stanford CREDO report revealed that students in high-performing charter networks are gaining four additional months of learning in math and three additional months of learning in reading per year, compared to similar students in traditional district schools.

At the same time, we are also seeing district, charter and private schools collaborate with a shared goal of improving education for all students.

The idea that families deserve good, accessible schools is fast becoming the 'new normal' and taking root across entire cities.

We are excited about efforts to improve persistently struggling schools in Atlanta. The foundation worked with the local district and leading charter operators to establish in-district schools — like Thomasville Elementary — with greater autonomy and improved outcomes.

Last year also saw momentum toward equitable funding for all public schools. In Colorado, a broad coalition helped secure bipartisan passage of legislation to equalize funding for charter and traditional district schools. This means more dollars into classrooms, more strong teachers and more quality school options.

To encourage innovation and identify new school models, the foundation is seeking school entrepreneurs with plans that would embody a fundamentally different experience for students or teachers. While we are starting small, the innovative schools in the pilot will have the potential to help foster learning and catalyze change across the country.

We are expanding support for teachers and communities and creating new school models and visions that are responsive to demands from different communities.

We're investing in innovators like Aaron Walker, CEO of Camelback Ventures. Camelback helps education leaders from underrepresented communities — primarily women and people of color — turn great ideas for students and schools into reality. In Houston, a foundation grant will help Teaching Excellence, a training program run by YES Prep Public Schools, train at least 620 educators, 70% of whom will identify as people of color, between 2018 and 2020.

In the K-12 education field, we too are experiencing the polarization and division being felt across the country. We are eager to see a recentering of politics that creates better conditions for policies that benefit students, schools and communities.

New schools, new school models, good measures of progress and a highly-qualified, diverse teaching workforce are not in themselves an objective.

The end we all seek is improved possibilities, better opportunities and a better tomorrow for the next generation of young people.

Innovation in Indianapolis Builds Stronger Schools

The city is serving students better by giving more autonomy, flexibility to educators



When Mariama Carson launched Global Preparatory Academy in 2016, it marked the culmination of years of hard work – and the realization of the Indianapolis educator’s dream to teach children in both English and Spanish.

Global Prep is a dual-language program serving a student population that is majority-minority and predominantly from low-income communities whose families are attracted to the opportunity for a bilingual education. It’s also an Innovation Network School within Indianapolis Public Schools, which gives Mariama and her team more flexibility and autonomy to find creative ways to best serve their students.

Within a year of restarting an existing public school, Riverside 44, that had received an F grade on the state’s report card, Global Prep – teaching the same students – received an A grade and had doubled the percentage of students passing math and English/Language Arts tests.

“We focused on building a positive culture,” Mariama says. “We were clear about expectations and what it means to be a student in an excellent school.”

Mariama’s early success with Global Prep would not have been possible – indeed the school itself might not ever have

opened – without years of collaboration and innovation among community members, elected officials and policymakers and education leaders in Indianapolis.

Facing longstanding challenges to deliver a strong education to students, particularly those from low-income neighborhoods, the city responded by enlisting the help of new partners and innovators.

Not only has Indianapolis welcomed new charter schools, but it has placed greater autonomy in the hands of many educators – like Mariama – to launch innovative district schools.

“We recognize that there is no one-size-fits-all solution to improve student outcomes.”

DR. LEWIS FEREBEE, SUPERINTENDENT, INDIANAPOLIS PUBLIC SCHOOLS



"Some of our biggest accomplishments include the expansion of high-quality options for families, aggressive intervention in our lowest-performing schools and replication of our highest-performing programs. We recognize that there is no one-size-fits-all solution to improve student outcomes," says Dr. Lewis Ferebee, superintendent of Indianapolis Public Schools.

Global Prep is a case in point. Mariama got the idea for a dual-language program as an elementary school teacher who was interested in setting her own educational strategy for her students.

She turned to The Mind Trust, an Indianapolis nonprofit that works to recruit and develop education innovators and launch high-quality charter schools and charter-like district schools.

Mariama received one of The Mind Trust's fellowships, which provided her the resources and time to develop the vision for Global Preparatory Academy. She visited strong immersion programs nationally and even worked at an immersion school in Mexico City. All this experience eventually informed the culture and curriculum foundation at Global Prep.

"Going out on my own was a very scary process – I couldn't have done it without The Mind Trust," Mariama reflects. "They helped introduce me to my board of directors and to financial support in the community, and helped put options and possibilities in front of me."

The Mind Trust's fellowships have empowered a range of entrepreneurs to create new educational options since it was founded in 2006.

The Walton Family Foundation has supported The Mind Trust since 2011 and has been investing in Indianapolis since the city's charter school law was passed in 2001, fueling the growth of many of the city's charter school operators and Innovation Network entrepreneurs through startup grants.

"By giving our school leaders the autonomy to implement the creative and innovative ideas they feel best meet the needs of their students, IPS is building an optimal environment to foster achievement and cultivate rewarding opportunities for our students and families," says Dr. Lewis Ferebee.

Mariama says the district has been "very open to listening" to new ideas and perspectives on how to meet students' educational needs.

At Global Prep, students learn core material in both English and Spanish. Many teachers are native Spanish speakers hailing from Spanish-speaking countries.

Ann Foisy, whose daughter, Claire, is a student at the school, says she has been impressed by the school's mission and is excited about her daughter learning a second language.

As a parent, Ann says she feels welcome to observe classes and is impressed to see her daughter's teachers get down to students' eye level as they work through Spanish lessons.

"I want [Claire] to be part of a real community that's representative of the real world and really builds her character."

New Orleans School Aims to Put Students on Fast Track to Flourish in College and Career

At Rooted School, at-risk kids focus on earning job offers and college acceptance letters



Jonathan Johnson knows what success looks like for his students at Rooted School in New Orleans.

It's not measured merely in higher test scores and graduation rates. It's measured by a very specific outcome – each Rooted graduate is able to pursue and access every career and educational opportunity they want.

"We want all of our kids to get acceptance letters to four-year colleges - and we want them to have full-time job offers," says Jonathan, the school's founder.

"We want to equip our kids to have options so they can live their lives on their own terms, as soon as possible. Whatever path is going to accelerate their journey to financial freedom."

It is an ambitious goal for any high school student, particularly for at-risk kids growing up in New Orleans.

Jonathan, a former eighth-grade teacher at KIPP Central City Academy in New Orleans, developed the model for Rooted School in the wake of a tragedy that transformed his opinion about the most-pressing educational needs for students living in the inner city.

A few years ago, one of Jonathan's students was murdered by a former classmate in a drug deal gone bad. The student who died, Ricky Summers, excelled at school and was on course to be awarded a full college tuition scholarship for academic excellence.

Jonathan realized that economic stress was the underlying factor in Ricky's death.

"Here was a kid who was the poster child of a success story. He worked hard. He was gritty. He was on track to receive a full tuition scholarship to any state university in Louisiana, in eighth grade. And still that wasn't enough to help him address the cumulative effects of poverty," Jonathan says.



"What students really need is to be able to 'take care of you and yours' sooner."



One way to do that, Jonathan believes, is by providing a technology-focused education that gives students the skills to work in high-wage, high-growth industries straight out of high school. He learned there was a likely shortage in New Orleans of qualified candidates for thousands of digital-sector jobs that are expected to be created over the next decade.

Jonathan built his school from concept to reality through collaboration with several partners committed to investing in educational innovation. With seed capital and research and development funding from 4.0 Schools and New Schools for New Orleans, Jonathan piloted Rooted School in 2015 within an existing New Orleans high school.

He then earned a fellowship from Camelback Ventures, an entrepreneurship incubator to help education leaders from underrepresented communities turn great ideas for students and schools into reality. Finally, he received a startup grant from the Walton Family Foundation to launch Rooted School in the fall of 2017 with 40 ninth-grade students.

Students spend mornings in general education classes and afternoonstaking technology courses. Rooted School has forged partnerships with several tech companies to develop curriculum and provide internships to prepare students for work after graduation.

“We are establishing a pipeline of talent to tech companies. We’re doing that by treating these companies as the customer and their entry-level openings as the opportunity,” Jonathan says.

“They help design our curriculum with those entry-level jobs in mind.”

The school’s first year went “better than my wildest dreams,” Jonathan says.

The ninth-grade students made strong gains in reading and 80% of kids are positioned to earn at least one employer-validated credential in front-end web design. Rooted’s entire teaching team is returning for the 2018-19 school year.

Rooted School will grow to serve 100 students in 2018. By 2020, the school will serve 240 students.

Jonathan says the school intends to develop a formal process for advising graduating students on how to choose between college or a full-time job upon graduation.

“The goal is ultimately to beat the streets in the fight for these kids’ lives,” Jonathan says.

2017 Grants Report

In 2017, the Walton Family Foundation's grantmaking exceeded \$530 million as we pursued our mission to solve tough social and environmental problems and create access to opportunity for people and communities. Over the past 30 years, the foundation's giving has reached \$6.2 billion and nearly 6,300 grantees.

Following is our full list of 2017 grants:

Program	Total
Environment	\$86,006,260
Home Region	\$59,898,178
K-12 Education	\$192,657,133
Special Projects	\$196,894,970
Total	\$535,456,540

Environment \$86,006,260

Oceans38,517,470

Advanced Conservation Strategies	75,000
Asociación Mundo Azul	6,000
Cape Cod Commercial Fishermen's Alliance, Inc.	152,585
Causa Natura, A.C.	150,000
ClientEarth	250,017
Comunidad y Biodiversidad, A.C.	965,200
Conservation International Foundation	7,546,595
Conservation Law Foundation Inc.....	30,000
Conservation Strategy Fund.....	50,000
Consultative Group on Biological Diversity	32,500
Context Partners	20,000
Costa Humboldt	30,000
Crespin Enterprises LLC dba CollaborateUp	52,000
Ecology Project International	150,000
Environmental Defense Fund, Inc.	6,850,477
FishChoice, Inc.	260,000
Fondo Mexicano para la Conservacion de la Naturaleza, A.C.	100,000
Fondo para la Acción Ambiental y la Niñez.....	2,000,000
FSG, Inc.	150,000
Fundación Geute Conservación Sur.....	61,103
Fundación Terram	100,000
Georgetown University	10,000
Global Greengrants Fund, Inc.	50,000
GR Japan K.K.	65,337
ImpactAssets, Inc.	868,000
Institute Deliverology Indonesia	100,000

International Community Foundation	94,600
International Conservation Caucus Foundation	197,917
International Pole & Line Foundation	300,000
International Seafood Sustainability Foundation	180,000
Marine Stewardship Council	2,731,240
Masyarakat dan Perikanan Indonesian	140,000
Meridian Institute.....	770,000
Monterey Bay Aquarium Foundation	280,000
National Fish and Wildlife Foundation.....	253,469
National Marine Sanctuary Foundation	60,000
New Venture Fund	595,000
Noroeste Sustentable.....	150,000
Ocean Awareness Project Inc dba Blue Frontier Campaign	10,000
Ocean Conservancy, Inc.....	2,250,000
Ocean Foundation	159,763
Ocean Outcomes	70,000
Oceana, Inc.	905,000
Pontifica Universidad Catolica	128,000
Pronatura Noroeste AC.....	250,000
PT Hatfield Indonesia	100,000
Reef Fish Conservation and Education Foundation Inc	175,000
Regents of the University of California at San Diego.....	285,841
Resources Legacy Fund.....	280,000
Sailors for the Sea Japan	125,000
Seafood Harvesters of America Education Fund	78,750
Seafood Industry Research Fund, Inc.	73,750
Seafood Legacy Co., Ltd.	40,000
SkyTruth	80,000
SmartFish AC	325,000
Sociedad de Historia Natural Niparaja A.C.	334,065
Sociedad Peruana de Derecho Ambiental	349,997
Springboard Partners.....	133,000
Stockholm Resilience Centre.....	165,000
Sustainable Fisheries Partnership Foundation	1,935,000
Sustainable Fishery Advocates dba FishWise	400,000
The Henry L. Stimson Center	50,000

The Nature Conservancy	1,546,489	National Young Farmers Coalition	500,000
Trust for Conservation Innovation	557,851	New Venture Fund	1,703,393
University of Washington.....	105,000	Partners for Western Conservation	249,697
University of Washington Foundation	25,000	Pronatura Noroeste AC.....	714,102
Wildlife Conservation Society.....	250,000	Public Policy Institute of California	10,000
World Wildlife Fund, Inc.	1,432,924	Restauremos el Colorado	1,030,000
Yayasan Upaya Indonesia Damai	20,000	River Network.....	182,091
Colorado River	21,490,705	Tamarisk Coalition	665,400
10.10.10	150,000	The Americas for the Arts	5,000
Alliance for Water Efficiency NFP	100,000	The Nature Conservancy	1,500,000
American Rivers, Inc.	550,000	Theodore Roosevelt Conservation Partnership, Inc.	300,000
American Whitewater.....	112,000	Trout Unlimited, Inc.	1,478,835
Bonneville Environmental Foundation	1,061,518	Trust for Conservation Innovation	500,000
Boulder Energy Conservation Center Inc. d/b/a Center for ReSource Conservation	105,000	U.S. Fish and Wildlife Service.....	20,000
Ceres, Inc.	225,000	University of Colorado Foundation	101,543
Colorado Foundation for Water Education dba Water Education Colorado.....	255,000	University of Utah	10,000
Colorado Mesa University	55,000	Water Education Foundation	5,000
Colorado River Water Users Association.....	10,000	Water Foundation	600,000
Colorado State University	15,000	Western Resource Advocates	800,000
Colorado Water Trust, Inc.....	400,000	Windward Fund.....	850,000
Colorado Watershed Assembly	7,000	Yuma Crossing National Heritage Area Corporation	27,349
Community Radio for Northern Colorado dba KUNC.....	77,000	Mississippi River	12,015,000
Conservation Colorado Education Fund	250,000	American Farmland Trust.....	450,000
Conservation Legacy	28,569	Bluestem Communications, Inc.....	345,000
Denver Water	400,000	Center for Rural Affairs	649,500
Environmental Defense Fund, Inc.	2,200,000	Ceres, Inc.	100,000
Forever Our Rivers Foundation	24,910	Delta Institute	100,000
Friends of Verde River Greenway.....	1,089,942	Ducks Unlimited, Inc.....	546,361
Gila Watershed Partnership of Arizona	448,315	Environmental Defense Fund, Inc.	1,500,000
Grand Staircase-Escalante Partners, Inc.....	700,000	Environmental Working Group.....	325,270
High Country Conservation Advocates.....	134,041	Field to Market	346,500
Institute for Journalism & Natural Resources.....	240,000	Illinois Stewardship Alliance.....	170,000
Meridian Institute.....	150,000	Institute for Journalism & Natural Resources.....	240,000
Meridian International Center	150,000	Iowa Environmental Council	175,000
National Audubon Society, Inc.....	1,300,000	Iowa State University of Science and Technology.....	156,495

Izaak Walton League of America, Inc.	37,500	Foundation for Louisiana.....	32,500
Land Stewardship Project.....	295,064	Greater New Orleans Development Foundation.....	350,000
Lewis and Clark Community College.....	350,000	Gulf Restoration Network.....	75,000
Louisiana Delta Adventures, Inc.	30,000	Lake Pontchartrain Basin Foundation	541,680
Meridian Institute.....	947,470	Louisiana Endowment for the Humanities	98,150
Mississippi Fish and Wildlife Foundation	195,000	Mobile Baykeeper, Inc.....	75,000
Mississippi River Cities & Towns Initiative.....	200,000	National Audubon Society, Inc.....	2,410,946
Mississippi's Lower Delta Partnership	30,000	National Wildlife Federation.....	2,786,460
National Corn Growers Association Foundation	430,000	Nonprofit Knowledge Works, Inc.....	225,000
National Fish and Wildlife Foundation.....	350,000	Public Affairs Research Council of Louisiana, Inc.	126,855
National Wildlife Federation.....	369,288	Restore or Retreat.....	350,000
New Venture Fund	15,000	Society of Environmental Journalists	65,029
Northeast Midwest Institute	125,000	SouthWings Inc.....	75,000
Practical Farmers of Iowa	305,241	The Administrators of the Tulane Educational Fund dba Tulane University.....	75,000
Prairie Rivers Network.....	100,000	The Coalition to Restore Coastal Louisiana	566,680
Purdue University	126,582	The Lens	75,000
R Street Institute	186,760	The Nature Conservancy	985,000
Regents of the University of Minnesota	200,000	Theodore Roosevelt Conservation Partnership, Inc.	315,000
River Network.....	10,000	University of New Orleans.....	125,000
Soil Health Institute	452,951	Innovation and Research	2,073,785
Sustainable Food Lab	154,825	Bay Area Video Coalition Inc	12,500
Taxpayers for Common Sense.....	110,000	Consultative Group on Biological Diversity.....	50,000
The Board of Trustees of the University of Illinois	33,053	Consultative Group on Biological Diversity.....	104,000
The Nature Conservancy	1,338,640	Environment News Trust	187,000
The Wetlands Initiative.....	65,000	Environmental Defense Fund, Inc.	300,000
Theodore Roosevelt Conservation Partnership, Inc.	83,500	Environmental Grantmakers Association	70,000
University of Notre Dame Du Lac.....	150,000	Environmental Law Institute, Inc.	23,000
Windward Fund.....	70,000	Field to Market	130,000
Zea Mays Foundation.....	150,000	National Corn Growers Association Foundation	250,000
Coastal	11,909,300	National Press Foundation Inc.....	95,000
Center for Planning Excellence, Inc.	75,000	National Wildlife Federation.....	100,000
Coastal Communities Consulting, Inc.	75,000	National Wildlife Federation.....	75,000
Conservation Alabama Foundation	75,000	New Venture Fund.....	175,000
Environmental Defense Fund, Inc.	2,086,000	Sand County Foundation Inc.....	65,000
Environmental Law Institute, Inc.	245,000		

State University of Iowa Foundation dba the University of Iowa Center for Advancement.....	19,585
The Chicago Community Foundation	50,000
The Nature Conservancy	25,000
Theodore Roosevelt Conservation Partnership, Inc.	10,000
Trust for Conservation Innovation	32,700
Union of Concerned Scientists Inc	200,000
University of Notre Dame Du Lac.....	50,000
University of Utah	15,000
Virgin Unite USA Inc.....	35,000

Home Region \$59,898,178

Northwest Arkansas52,537,755

Arkansas Arts Academy	531,102
Arkansas Natural Heritage Commission	1,050,268
Artists Laboratory Theatre.....	340,257
Arts Center of the Ozarks	113,800
Artspace Projects, Inc.	215,000
Beaver Watershed Alliance.....	169,700
Bentonville Bella Vista Trailblazers Association, Inc.....	8,376,651
Bentonville Child Care and Development Center, Inc. d/b/a Helen R. Walton Children's Center	11,348,579
Bentonville Public Schools.....	106,500
Bicycle Coalition of the Ozarks dba BikeNWA	318,277
Children's Museum of Northwest Arkansas	977,155
City of Bella Vista.....	146,344
City of Bentonville	1,469,320
City of Fayetteville	3,765,714
City of Rogers.....	3,057,327
City of Siloam Springs.....	194,536
City of Springdale.....	175,673
City Sessions, Inc.	20,000
Community Development Corporation of Bentonville Bella Vista	152,155
Community Venture Foundation.....	665,000
Crystal Bridges Museum of American Art, Inc.	1,351,890
Curators of the University of Missouri.....	129,900

Downtown Bentonville, Inc.....	360,000
Downtown Springdale Alliance	132,370
Folk School of Fayetteville, Inc.	195,000
Haas Hall Academy	2,017,855
Illinois River Watershed Partnership.....	117,258
Jones Center for Families, Inc.....	225,000
Jones Trust	1,050,000
Northwest Arkansas Community College Foundation, Inc.....	1,515,881
Northwest Arkansas Community Creative Center.....	383,550
Northwest Arkansas Council Foundation.....	2,184,594
Northwest Arkansas Jazz Society, Inc.....	50,000
Northwest Arkansas Land Trust	125,000
Northwest Arkansas Regional Planning Commission.....	178,755
Ozark Off Road Cyclists.....	280,000
Ozark Regional Transit, Inc.	150,000
Rogers Public Schools	117,316
State Parks and Recreation Foundation of Arkansas.....	1,033,544
Symphony Orchestra of Northwest Arkansas	86,250
Thaden School	2,999,988
Theatre Squared, Inc.	3,797,250
Tricycle Theatre for Youth	245,000
University of Arkansas.....	241,451
University of Arkansas Foundation, Inc.	114,066
Upper White River Basin Foundation, Inc.	35,000
Watershed Conservation Resource Center.....	227,480

Delta Region6,820,771

Boys & Girls Club of Phillips County	170,332
Boys & Girls Club of the Mississippi Delta.....	50,000
City of Clarksdale	225,000
Clarksdale Collegiate	325,000
Coahoma Collective.....	382,000
Coahoma County School District.....	160,000
Griot Arts, Inc.	37,500
Helena-West Helena/Phillips County Port Authority	110,750

KIPP Delta Public Schools	2,034,676
Mississippi First, Inc.	150,000
Mississippi News and Information Corp	90,000
Spring Initiative, Inc.....	105,000
Teach for America, Inc.....	1,951,656
The Aspen Institute, Inc.....	444,044
The College Initiative	250,000
University of Arkansas.....	334,813

Research and Evaluation.....539,652

21st Century Partnership for STEM Education	98,241
Local Initiatives Support Corporation	3,000
National Opinion Research Center.....	180,080
RAND Corporation	98,063
San Diego State University Foundation	92,514
Springdale School District.....	5,100
University of Arkansas.....	62,654

K-12 Education \$192,657,133

Investing in Cities100,911,498

100 Black Men of Metro New Orleans, Inc.....	200,000
50CAN, Inc.....	1,365,503
Alliance for College-Ready Public Schools.....	200,000
Alliance for School Choice, Inc. d/b/a American Federation for Children Growth Fund	126,000
Ambitious Initiatives, Inc.	200,000
American Institutes for Research in Behavioral Sciences.....	58,893
Ampersand Education, LLC	112,000
Artesian Community School.....	325,000
Aspire University, Inc.	400,000
Associated Professional Educators of Louisiana	85,000
Association of American Educators Foundation	200,000
Atlanta Public Schools	638,200
Avondale Meadows Academy, Inc.....	325,000
Beacon Center of Tennessee	100,000
Better Outcomes for Our Kids, Inc.	133,236
Big Picture Company, Inc. d/b/a Big Picture Learning.....	1,403,705

Blue Engine, Inc.	74,830
Blue Oak Academy.....	325,000
Boston College Trustees	49,453
Boston Schools Fund, Inc.....	1,145,000
Bricolage Academy	126,250
Brilla College Preparatory Charter School at High Bridge.....	325,000
Brookings Institution	147,528
Brothers Empowered to Teach Initiative.....	225,000
Building Excellent Schools, Inc.	3,191,000
Building Hope.....	200,000
California Charter School Association.....	5,500,000
Cambiar Education	350,000
Campaign For School Equity	200,000
Celerity Educational Group.....	400,000
Charter Board Partners.....	251,000
Charter Facility Solutions	300,000
Charter Fund, Inc.....	1,575,000
Charter School Enhanced Facilities Fund	2,028,533
Children at Risk, Inc.	250,000
Children Now.....	200,000
Childrens Aid College Prep Charter School.....	325,000
CHIME Institute.....	325,000
Christel House Academy, Inc.....	250,000
Citizens of the World Charter Schools - Los Angeles	325,000
CityBridge Foundation	200,000
Civic Builders, Inc.	1,340,000
Classical Charter Schools	325,000
Collegiate Academies	300,000
Colorado Children's Campaign, Inc.	60,000
Colorado Latino Leadership and Research Organization, Inc.....	105,000
Colorado Nonprofit Development Center	500,000
Colorado Succeeds	250,000
Common Sense Policy Roundtable Forum	295,000
CSGF Camden Facility Fund LLC	5,000,000
CSGF Memphis Facility Fund LLC.....	5,000,000

DC Preparatory Academy	140,000	Georgia Charter Schools Association, Inc.....	763,827
DC Public Education Fund	1,064,957	Georgia Public Policy Foundation, Inc.....	75,000
Denver Foundation.....	40,000	Go Public Schools.....	500,000
Denver Public Schools Foundation	1,645,000	Great Hearts America-Texas	325,000
Denver School of Science and Technology, Inc.	76,000	Great Public Schools Now.....	1,340,000
Designated Exceptional Services for Independence	65,000	Great School Choices, Inc.	50,000
Diverse Charter Schools Coalition, Inc.....	100,000	Green Dot Public Schools California	100,000
Donnell-Kay Foundation, Inc.	125,000	Hebrew Language Academy Charter School 2.....	325,000
EdBuild, Inc.	300,000	High Hopes Colorado	175,000
EdConnect Inc.....	40,000	High Tech High Graduate School of Education	1,414,041
Edna Martin Christian Center.....	65,000	HighTech LA.....	325,000
EdNavigator, Inc.	450,000	Ignite Achievement Academy.....	325,000
Educate78	1,290,000	Independence Institute	125,000
Education Cities, Inc.....	45,000	Indianapolis Public Schools	228,900
Education First Consulting, LLC.....	49,180	Indianapolis Public Schools Education Foundation, Inc.....	28,900
Education for Change.....	80,000	Innovate Public Schools	500,000
Education Forward DC	2,375,000	InspireNOLA Charter Schools	209,500
Education Reform Now, Inc.....	788,550	Institute for Innovation in Public School Choice, Inc.	125,000
Education Trust, Inc.	1,398,333	Institute for Quality Education, Inc.....	500,000
Educators for Excellence.....	1,050,000	Interfaith Education Fund, Inc.....	90,000
EdVoice Institute for Research and Education	500,000	International Charter School of Atlanta, Inc.	25,000
Empower Schools, Inc.	500,000	Ivy Preparatory Academy at Gwinnett, Inc.....	25,000
Enroll Indy, Inc.	400,000	Kaleidoscope School.....	325,000
Ernst & Young LLP.....	568,250	KIPP Colorado Schools	150,000
Families Empowered	310,000	KIPP LA Schools	100,000
Families for Excellent Schools, Inc.	750,000	KIPP, Inc. aka KIPP Houston Public Schools	120,000
Families Helping Families of Southeast Louisiana, Inc.	71,000	La Plaza, Inc.....	200,000
Federal City Council	105,000	Larchmont Charter School	74,500
FirstLine Schools, Inc.	75,000	Latinos for Education, Inc.	200,500
Foundation for Excellence in Education, Inc.	2,036,916	Leading Educators, Inc.	342,000
Foxborough Regional Charter School.....	325,000	Louisiana Association of Public Charter Schools	550,000
French and Montessori Education, Inc.	325,000	Luminary Learning Network	225,000
Friends of Choice in Urban Schools	893,192	Manhattan Institute for Policy Research, Inc.	450,995
Gabriella Charter School 2.....	325,000	Map Academy Charter School	100,000
Gateway University.....	325,000	Marian University.....	500,000
Georgia Center for Opportunity, Inc.	67,500		

Massachusetts Business Alliance for Education, Inc.	200,000
Massachusetts Charter Public School Association, Inc.	300,000
Matrix for Success Academy	325,000
Metro IAF, Inc.	525,000
Morris Jeff Community School	325,000
National Center for Special Education in Charter Schools, Inc.	464,694
National Council on Teacher Quality	160,000
Neighborhoods Planning & Community Development Network	50,000
New England Blacks in Philanthropy	75,000
New Leaders	550,000
New Schools for Baton Rouge	85,000
New Schools for New Orleans, Inc.	1,890,000
New York University	251,200
Noble Minds, Inc.	325,000
Northeast Charter Schools Network, Inc.	250,000
Oakland Community Organizations, Inc.	150,000
Oakland Public Education Fund	150,000
One Chance Illinois	100,000
Our Voice Nuestra Voz	300,000
Our World Neighborhood Charter School	325,000
Parent Revolution, Inc.	500,000
Parents for Great Camden Schools	260,100
Partnership for Los Angeles Schools	500,000
Partnership with Children, Inc.	80,000
Pataula Charter Academy, Inc.	25,000
PAVE, Inc.	591,396
Pelican Institute for Public Policy	40,000
Phoenix Charter Academy Foundation	50,000
Pioneer Institute, Inc.	160,375
President and Fellows of Harvard College	437,911
Purdue Polytechnic High School of Indianapolis	325,000
Purpose Built Schools Atlanta, Inc.	1,326,250
Quarry Kingdom Development	113,075
Relay Graduate School of Education	2,250,000

Results in Education Foundation	800,000
Rise Colorado	50,000
Rocky Mountain Preparatory School	750,000
Rooted School	325,000
San Antonio Area Foundation	1,453,475
San Antonio Foundation for Excellence in Education, Inc.	325,000
School Empowerment Network, Inc.	279,680
School Leader Lab	330,000
Sherman Thomas Charter School	325,000
Silicon Schools Fund, Inc.	833,333
Social Entrepreneurs of New Orleans d/b/a Propeller: A Force for Social Innovation	250,000
Speak Up Foundation	125,000
Stand for Children Leadership Center	150,000
Strive Preparatory Schools	490,000
Students for Education Reform, Inc.	550,000
Success Academy Charter Schools, Inc.	1,000,000
Surge Institute	350,000
Susie King Taylor Community School	325,000
Teach Plus Incorporated	868,625
Tennessee Charter School Center	500,000
Tennessee State Collaborative on Reforming Education	525,000
Texas Charter Schools Association	450,000
The Community Foundation for Greater Atlanta, Inc.	650,000
The CUBE Corp	325,000
The Greater New Orleans Foundation	183,750
The Memphis Lift Parent Institute	375,000
The Mind Trust, Inc.	1,000,000
The New School	100,000
The Oaks Academy, Inc.	130,185
Third Future Schools	325,000
Thurgood Marshall College Fund, Inc.	434,667
TNTP, Inc. dba The New Teacher Project, Inc.	361,938
Together Colorado	200,000
Trustees of Columbia University in the City of New York	124,300

Union Capital Boston, Inc.	150,000
United Way, Inc. d/b/a United Way of Greater Los Angeles	200,000
University of Washington Foundation - Center on Reinventing Public Education	624,750
UP Education Network, Inc.	275,000
Urban League of Greater New Orleans Co, Inc.	400,000
Urban League of Metropolitan Denver	27,500
Urban Teacher Center	1,214,000
Valley Charter School	73,292
Westside Innovative School House, Inc.	325,000
WHIN Music Community Charter School	325,000
Wildflower Foundation.....	700,000
Yellowstone Education Foundation	325,000
YES Prep Public Schools, Inc.	383,000
YMCA of Greater Boston.....	75,000
Young Aspiring Americans for Social and Political Activism	75,829

High-Quality Schools73,801,603

50CAN, Inc.	1,673,875
Abekam	125,000
Achievement First, Inc.	650,000
Advance Illinois NFP.....	400,000
Alliance for School Choice, Inc. d/b/a American Federation for Children Growth Fund	3,200,000
Alpha Phi Alpha Fraternity, Inc.	85,000
Alpha Phi Alpha GEH Scholarship Endowment	10,000
America Succeeds	300,000
American Montessori Society, Inc.	28,000
America's Promise - The Alliance for Youth	325,000
Arizona Chamber Foundation.....	413,686
Arizona School Choice Administration Corporation	50,000
Barry Goldwater Institute for Public Policy Research.....	100,000
Bay Area Video Coalition Inc	29,444
Bellwether Education Partners, Inc.	24,000
Big Picture Company, Inc. d/b/a Big Picture Learning.....	5,000
Blackstone Valley Prep Mayoral Academy	82,000

Boys and Girls Clubs of Greater Washington, Inc.	10,000
Building Excellent Schools, Inc.	3,573,487
Campaign for Tomorrow's Jobs	75,000
Carnegie Foundation for the Advancement of Teaching.....	15,000
Center for American Progress	275,000
Center for Individual Rights.....	60,000
Chalkbeat, Inc.	435,000
Charter Board Partners.....	8,000
Charter Fund, Inc.....	5,000,000
Chiefs for Change.....	500,000
Colorado Latino Leadership and Research Organization, Inc.	5,000
Communities Foundation of Texas, Inc.	187,150
Connecticut Coalition for Achievement Now, Inc.....	250,000
Conservative Leaders for Education	50,000
Council of Chief State School Officers	250,000
CSGF Facility Fund III LLC	3,800,000
CSUSB Philanthropic Foundation	10,000
Data Quality Campaign	125,000
DC Public Education Fund	10,000
Delta Sigma Theta Sorority, Inc.....	50,580
Denver Public Schools Foundation	35,000
Diverse Charter Schools Coalition, Inc.	395,000
Drexel Funds.....	1,679,780
Echoing Green Foundation.....	15,000
EdChoice, Inc.....	365,000
Editorial Projects in Education, Inc.	280,000
Education Cities, Inc.....	750,000
Education Pioneers, Inc.....	1,850,000
Education Reform Now, Inc.....	3,443,225
Education Resource Strategies, Inc.	150,000
Education Trust, Inc.	1,526,000
Education Writers Association	410,950
Ethiopian Orthodox Tewahedo St Mary Church	15,000
FaithActs for Education, Inc.	300,000

Families for Excellent Schools, Inc.	250,000
Families in Schools.....	10,000
Fellowship BMEC, Inc.....	25,000
First Nations Development Institute.....	15,000
Foundation for Excellence in Education, Inc.	325,000
Friends of Choice in Urban Schools	12,000
Georgetown University	125,000
Grantmakers for Education.....	35,000
Great Public Schools Now.....	20,000
GreatSchools	2,000,000
GSV Summit, LLC.....	225,000
Health Resources in Action, Inc.	10,000
Heartland Institute.....	10,000
Heritage Foundation.....	250,000
Hiawatha Academies.....	119,790
Illinois Network of Charter Schools.....	542,000
Independent Womens Forum.....	25,000
Institute For Justice	500,000
Jack and Jill of America Foundation, Inc.....	7,500
Kansas University Endowment Association	16,964
Kappa Alpha Psi Foundation, Inc.	60,500
KIPP Foundation.....	5,251,375
La Plaza, Inc.....	5,000
Latinos for Education, Inc.	10,000
Leadership for Educational Equity Foundation	5,000,000
Loyola Marymount University.....	10,000
Ludacris Foundation.....	15,000
Manhattan Institute for Policy Research, Inc.	25,000
Marquette University.....	385,000
Massachusetts Parents United	20,000
Memphis Inner City Rugby	10,000
Michigan Association of Public School Academies	246,360
Minnesota Comeback	250,000
Mission Investors Exchange, Inc.	40,000
National Alliance for Public Charter Schools	3,023,062
National Association of Black Journalists	65,000

National Association of Charter School Authorizers	2,150,000
National Association of State Boards of Education	78,000
National Conference of State Legislatures.....	123,141
National Congress of American Indians Fund	70,000
National Council on Teacher Quality	100,000
National Indian Education Association.....	85,000
National Urban League, Inc.	165,000
New America Foundation	62,500
New Profit, Inc.	105,669
New Schools for Chicago NFP	200,000
North American Council for Online Learning	100,000
Opportunity America Educational Fund	50,000
Pahara Institute.....	750,000
Para Los Ninos.....	15,000
Parent Choice Inc.	535,000
PAVE, Inc.....	5,000
Philanthropy Roundtable.....	150,000
Policy Innovators in Education Network, Inc.	500,000
President and Fellows of Harvard College	510,898
Queens Library Foundation, Inc.	15,000
Reaching At-Promise Students Association, Inc.	15,000
Reason Foundation.....	300,000
Results in Education Foundation	676,000
Schoolzilla PBC	20,000
State Policy Network.....	119,935
Step Up for Students, Inc.	500,000
Teach for America, Inc.....	8,755,000
Texas Tribune, Inc.	80,000
The 74 Media, Inc.	975,000
The Arizona Charter Schools Association.....	218,000
The Atlantic Monthly Group, LLC.....	200,000
The Foundation for Research on Equal Opportunity.....	181,514
The Third Way Foundation, Inc.	310,000
Thomas B. Fordham Institute	925,000
TNTP, Inc. dba The New Teacher Project, Inc.	212,718

Trustees of Columbia University in the City of New York.....	311,050	George Washington University	263,510
United Negro College Fund, Inc.	942,450	Hoover Institution, Stanford University	612,000
United Way of the National Capital Area.....	10,000	Johns Hopkins University	93,725
University of Notre Dame Du Lac.....	410,000	Massachusetts Institute of Technology	282,706
Washington Area Women's Foundation, Inc.....	10,000	MDRC	315,738
Washington State Charter Schools Association	175,000	Michigan State University	100,821
Wisconsin Institute for Law & Liberty, Inc.	315,000	National Association of Charter School Authorizers	431,889
Yale University	25,000	New York University	148,745
Innovation	10,900,278	North Carolina State University	50,794
4.0 Schools	700,000	President and Fellows of Harvard College	653,511
Bellwether Education Partners, Inc.	281,000	RAND Corporation	593,978
Cambiar Education	1,505,000	Teachers College, Columbia University	567,935
Camelback Ventures, Inc.	900,000	The Board of Trustees of the Leland Stanford Junior University.....	428,705
Educate Now.....	300,000	Trustees of the University of Pennsylvania.....	408,394
EL Education, Inc.	532,000	University of Arkansas.....	256,074
Empower Schools, Inc.	100,000	University of Florida.....	140,720
High Tech High Graduate School of Education	200,000	University of Notre Dame Du Lac.....	79,118
Impact for Education, LLC.....	45,000	Urban Institute	100,000
Junior Achievement of Georgia, Inc.....	250,000	Vanderbilt University.....	185,324
NewSchools Venture Fund	3,841,318		
Reframe Labs.....	645,503		
Research Foundation for the State University of New York.....	225,457		
The Century Foundation Inc.....	275,000		
Thomas B. Fordham Institute	75,000		
Transcend, Inc.	950,000		
Valor Collegiate Academies	75,000		
Research and Evaluation.....	7,043,754		
American Institutes for Research in Behavioral Sciences.....	245,250		
Association for Education Finance and Policy, Inc.	51,200		
Atlanta Public Schools	300,000		
Bellwether Education Partners, Inc.	50,187		
Character Lab, Inc.	323,936		
EdChoice, Inc.....	10,000		
Education Analytics, Inc.....	240,253		
Educational Commission of the States.....	109,241		
		Special Projects.....	\$196,894,970
		100 Black Men of Greater Little Rock, Inc.....	5,000
		20/20 Leadership	5,000
		2020 Mom	51,000
		A New Leaf, Inc.	5,000
		AB Christian Learning Center	15,000
		Academy for Global Citizenship Charter School	40,000
		Access Montessori	260,575
		Activation Energy, Inc.	150,000
		Active Transportation Alliance	60,000
		Ada Area Chamber of Commerce Foundation.....	5,000
		Adult Development Center of Benton County, Inc. aka Open Avenues.....	15,000
		African Parks Foundation of America	1,000,000
		Ag Technology and Environmental Stewardship Foundation, Inc.	75,000

Agape Mission 2,500

Alliance for Multicultural Community Services 500,000

Alzheimer's Arkansas Programs and Services..... 2,500

American Academy in Rome 50,000

American Cancer Society 10,000

American Cancer Society, Inc. 2,500

American Civil Liberties Union Foundation, Inc. 12,700

American Diabetes Association, Inc. 7,500

American Enterprise Institute
for Public Policy Research..... 100,000

American Foundation for
Suicide Prevention Arkansas..... 2,700

American Heart Association..... 25,000

American Heart Association Phoenix..... 35,000

American Indian Cultural Center Foundation..... 10,000

American Institutes for
Research in Behavioral Sciences 105,967

American Montessori Society, Inc. 716,000

American National Red Cross 5,000

American Parkinson Disease Association 10,000

Americans for the Arts, Inc. 20,000

AMI/USA 66,833

Amigos de las Americas 6,500

Amon Carter Museum of Western Art..... 4,050,000

Amp the Cause 1,000

Anderson Betterment Club 6,000

Angel Flight West, Inc..... 15,000

Animal Protective Association..... 2,000

Animal Welfare & Adoption
Agency of Miami Oklahoma 5,000

AOPA Foundation..... 140,000

AR Kids Read..... 10,000

ARC Group Homes, Inc..... 5,000

Area Agency on Aging of
Northwest Arkansas Foundation..... 43,000

Arkansans for Education Reform Foundation..... 350,000

Arkansas Arts Academy 150,000

Arkansas Arts Academy Foundation 9,855

Arkansas Arts Center Foundation 106,000

Arkansas Athletes Outreach..... 10,000

Arkansas Baptist College 5,000

Arkansas Black Hall of Fame Foundation..... 5,000

Arkansas Children's Hospital Foundation, Inc. 1,054,955

Arkansas Committee of the National
Museum of Women in the Arts..... 3,000

Arkansas Community Foundation, Inc. 1,157,422

Arkansas Department of Education..... 30,000

Arkansas Extension Homemakers Council 10,000

Arkansas Governor's Mansion Association..... 1,000

Arkansas Hunger Relief Alliance, Inc..... 5,000

Arkansas Independent Colleges and Universities -
Independent College Fund of Arkansas 12,000

Arkansas Policy Foundation 10,000

Arkansas Single Parent Scholarship Fund..... 5,000

Arkansas Special Olympics, Inc. 11,000

Arkansas State Council on Economic Education 20,000

Arkansas State University Mountain Home..... 3,000

Arkansas Symphony Orchestra Foundation..... 5,000

Arkansas Tech University..... 202,476

Arkansas Valley Soccer Association, Inc. 5,000

Arkansas Venture Center 5,000

Arts Center of the Ozarks 6,000

Arts for All, Inc. 10,000

ARVets..... 2,500

Asia Society 10,000

Aspen Center for Environmental Studies..... 250,000

Aspen Country Day School, Inc. 35,000

Aspen Journalism 100,000

Aspire of Southwest Missouri 5,000

Assistance League of Norman, Inc. 2,500

Association Montessori Internationale..... 193,066

Association of Black Foundation Executives, Inc. 10,000

Association of Missouri Charter Schools..... 250,000

ASU Foundation for A New
American University 3,328,470

Aurora R-8 School District..... 6,500

Australis Aquaculture, LLC..... 250,000

Aviation Impact Foundation, Inc.	11,148	Big Brothers Big Sisters of Oklahoma, Inc.....	10,000
Ballet Arkansas.....	2,500	Bill, Hillary and Chelsea Clinton Foundation.....	1,000,000
Baptist Health Foundation.....	5,000	Blackbird Academy of Arts, Inc.	5,000
Barracks Foundation	7,500	Blue Ridge School Incorporated	95,990
Barrow Neurological Foundation	50,000	Blue Star Mothers of America, Inc.....	5,000
Bartlesville Area Habitat for Humanity.....	5,000	BoardSource	25,000
Bartlesville Civic Ballet, Inc.....	1,500	Boone County Imagination Library.....	2,000
Bartlesville Community Foundation.....	10,000	Boston Foundation, Inc.	500,000
Bartlesville Education Promise, Inc.	5,000	Boy Scouts of America Cherokee Area Council.....	2,500
Bartlesville Public Schools	10,000	Boy Scouts of America Last Frontier Council	10,000
Bartlesville Regional United Way, Inc.....	1,000	Boy Scouts of America/Indian Nations Council, Inc.	15,000
Bartlesville Sports Commission	10,000	Boy Scouts of America/Westark Area Council	245,500
Barton Springs Conservancy	30,000	Boys & Girls Club of Denison, Inc.	2,500
Baxter County Public Library Foundation	1,150	Boys & Girls Club of Phillips County.....	500
Baxter County Sheriff	5,000	Boys & Girls Club of South Logan County	3,250
Beaver Watershed Alliance.....	8,000	Boys and Girls Club of Bartlesville.....	5,000
Bella Vista Community Television Association	5,000	Boys and Girls Club of Benton County	25,000
Bella Vista Courtesy Van, Inc.	5,000	Boys and Girls Club of Green Country, Inc.....	5,000
Bella Vista Foundation.....	60,707	Boys and Girls Club of Nowata, Inc.	5,000
Bella Vista Historical Society.....	2,000	Boys and Girls Club of Oklahoma County, Inc.....	10,000
Bella Vista Public Library Foundation	5,000	Boys and Girls Club of Ottawa County	2,500
Benton County	290,284	Boys and Girls Club of Paris, Inc.	3,500
Benton County Historical Society	3,000	Boys and Girls Club of Saline County.....	7,500
Bentonville Bella Vista Trailblazers Association, Inc.	1,998,300	Boys and Girls Club of the Ozarks	5,000
Bentonville Child Care and Development Center, Inc. d/b/a Helen R. Walton Children's Center	2,100,000	Boys and Girls Clubs of America.....	25,000
Bentonville Historical Museum, Inc.....	3,850	Break Away Cycling.....	11,400
Bentonville Library Foundation	5,000	Bridge2Rwanda, Inc.	100,000
Bentonville Parks Conservancy, Inc.....	414,641	Bridges of Norman, Inc.	2,500
Bentonville Public Schools.....	38,855	Bright by Three.....	200,000
Bentonville Public Schools Foundation	10,000	Brighter Outlook, Inc.	5,500
Berryville Restoration Fund, Inc.	5,000	Bryant Youth Association, Inc.	4,000
Bessie's Hope.....	5,000	Building Equity Initiative, Inc.	759,000
Best Friends Animal Society	15,000	Bull Shoals-Lakeview Rotary Club Foundation	2,100
Beta Eta Lambda Scholarship Foundation of Alpha Phi Alpha	2,500	Byng Excellence in Education Foundation	5,000
Bicycle Coalition of the Ozarks dba BikeNWA	98,000	Cabot Scholarship Foundation, Inc.	4,000
		California Academy of Sciences.....	30,000

CALmatters	100,000
Camp Aldersgate, Inc.....	5,000
Camp Loughridge	15,000
Camp Summit, Inc.....	100,000
Camp War Eagle, Inc.....	8,926,468
Caney Alumni Association	1,500
Caney Valley Schools	2,500
Canopy NWA.....	155,000
Care to Learn	10,000
CareerWise Colorado	300,000
Cargo Ranch, Inc.	2,500
Carl Junction Educational Foundation	3,000
Carleton College	135,090
Carlton Landing Academy, Inc.	325,000
Carroll and Madison Public Library Foundation	5,000
Cart Guy, Inc.....	7,500
Carthage Crisis Center, Inc.	5,000
CASA of Crawford County, Inc.....	2,000
CASA of Northwest Arkansas, Inc.	12,000
CASA of the Tri-Peaks	3,250
CASA Voices for Children, Inc.	2,000
Cassville IV School District	4,000
Catholic Charities & Community Services of the Archdiocese of Denver	50,000
Catholic Charities of the Archdiocese of Oklahoma City.....	25,000
Cato Institute	75,000
Cedarville Public School District.....	5,000
Center for American Progress	453,705
Center for Curatorial Leadership.....	10,000
Center for Neighborhood Technology.....	10,000
Centers for Youth and Families, Inc.	7,500
Central Arkansas Library System Foundation	2,500
Central Baptist Church	5,000
Central Baptist College.....	10,000
Central Oklahoma Community Action Agency	1,500
Cerebral Palsy of Tri-County, Inc.....	3,000
Chalkbeat, Inc.	134,000

Champion Athletes of the Ozarks	5,000
Charles Armstrong School	5,000
Child Advocacy Center, Inc.	3,000
Child Advocates of Silicon Valley, Inc.	5,000
Childhelp, Inc.	166,666
Children's Advocacy Center, Inc.....	1,000
Children's Center.....	10,000
Children's Health Council, Inc.....	1,000
Children's Hospital Colorado Foundation	100,000
Children's Museum of Denver, Inc.	5,000
Choate Rosemary Hall Foundation, Inc.	555,000
Chopra Foundation.....	85,000
Christian Action Ministries.....	5,000
Christian Associates of Table Rock Lake.....	2,500
Christian Ministers Alliance, Inc.	2,500
Church of the Pioneers Foundation	5,000
Church Women United Duncan Toy Shop	5,000
City Church, Inc. dba Youth Institute of College Station	3,500
City Connections, Inc.	7,500
City of Bentonville	8,708
City of Bentonville Advertising d/b/a Visit Bentonville	29,684
City of Centerton	259,450
City of Elkins - Elkins Sports Complex	5,000
City of Fire Community Development d/b/a Covenant Keepers College Preparatory School	108,520
City of Fort Worth - Animal Adoption Center	20,000
City of Gravette.....	1,671
City of Harrison Police Department	2,000
City of Lowell.....	1,300
City of North Little Rock	5,000
City of Nowata	2,000
City of Pea Ridge	4,655
City of Pineville	3,500
City of Siloam Springs.....	13,497
City of Springdale	1,451,639
City of Yellville	2,000

City Parks Conservancy	5,000
City Sessions, Inc.	12,470
City Year, Inc.	207,500
cityWILD.....	5,000
Civic Builders, Inc.	1,159,612
Civic Canopy.....	49,414
Civic Symphony of Benton County Guild, Inc. d/b/a Arkansas Philharmonic Orchestra.....	25,000
Civitan Center	2,500
Claremore Public Schools Foundation, Inc.	5,000
Claude Parrish Radiation Institute Foundation, Inc.	5,000
Clayton Early Learning	25,000
Cleveland County Christmas Store.....	2,000
Cleveland County Family YMCA, Inc.	5,000
Climate Leadership Council, Inc.....	375,000
Clothes to Kids of Denver	2,000
Coaching Corps	10,000
Coffeyville Community College Foundation.....	6,000
Coldwater of Lee's Summit.....	5,000
College of the Ozarks	50,000
Collegiate Hall.....	10,000
Colorado Business Group on Health	6,000
Colorado Children's Campaign, Inc.	50,000
Colorado Coalition for the Homeless	60,000
Colorado Fourteeners Initiative.....	2,000
Colorado League of Charter Schools	179,750
Colorado Montessori Association	34,400
Colorado Nonprofit Development Center	70,000
Colorado Seminary d/b/a University of Denver	118,761
Colorado Therapeutic Riding Center.....	10,000
Colorado Young Leaders	147,000
Colorado Youth Tennis Foundation	15,000
Columbia College (Missouri).....	10,000
Columbia Public Schools.....	2,000
Communities Foundation of Texas, Inc.	52,500
Community Activism Law Alliance.....	11,000
Community Childrens Theatre of Fort Smith.....	5,000

Community Development Corporation of Bentonville Bella Vista	5,000
Community Foundation of North Texas.....	200,000
Community Foundation of the Ozarks, Inc.	11,000
Community Health Center of Southeast Kansas, Inc.....	4,000
Community Health Clinic of Joplin.....	2,500
Community Partnership of the Ozark, Inc.	2,500
Community Renewal of Pottawatomie County, Inc.	2,500
Community Rescue Mission, Inc.....	5,000
Community Theatre for Southwest Missouri	5,000
Compass Montessori Secondary School	150,000
Congress for the New Urbanism	50,000
Congressional Black Caucus Foundation, Inc.	60,000
Congressional Hispanic Caucus Institute, Inc.	50,000
Connecting for Good, Inc.	5,000
Conservation International Foundation	6,589,975
Contemporary Austin Museum, Inc.	10,000
Conway County Center for Exceptional Children	4,130
Cookson Hills Christian School, Inc.	40,000
Cossatot River School District	2,500
Council for Economic Education.....	20,000
Counseling & Recovery Services of Oklahoma, Inc.....	5,000
Court Appointed Special Advocate for Children, Inc. Muskogee	5,000
Coweta Education Foundation.....	3,000
Coweta Friends of the Library.....	1,000
Coweta Public Schools	6,000
Craig County Emergency Management.....	5,000
Crawford County Senior Citizens, Inc.....	2,000
Credit & Homeownership Empowerment Services aka CHES, Inc.....	5,000
Cristo Rey Fort Worth Catholic High School, Inc.....	250,000
Cross Timbers Senior Citizen	5,000
Crystal Bridges Museum of American Art, Inc.....	139,042
Curators of the University of Missouri - Kansas City.....	5,000

Cycle Kids, Inc.	62,500
Delaware County Childrens Special Advocacy Network, Inc.....	5,000
Delaware County Historical Society	2,000
Delta Presents Outreach Foundation, Inc.	2,500
Denison Independent School District	10,000
Denison ISD Education Foundation, Inc.	10,000
Denver Children's Advocacy Center	20,000
Denver Health Foundation	150,479
Denver Inner City Parish, Inc.....	40,000
Denver Pay For Success, LLC.....	374,407
Denver Public Schools.....	145,290
Denver Tennis Park, Inc.	3,974,614
Denver Urban Scholars	10,000
Dewey Public Schools.....	5,000
Diamond City Police Department.....	2,000
Donnell-Kay Foundation, Inc.	50,000
DonorsChoose.org.....	100,000
Dover Public Education Foundation, Inc.	5,000
Down Syndrome Guild of Greater Kansas City, Inc.	5,000
Downtown Partnership - d/b/a Downtown Little Rock Partnership.....	5,000
Downtown Springdale Alliance	139,000
Dress for Success Northwest Arkansas	10,000
Duncan Public Schools Foundation.....	10,000
e-STEM Public Charter Schools, Inc.	10,089,346
E. L. Bob Harlin and Vesta Harlin Charitable Trust	1,000
EAA Aviation Foundation, Inc.	50,000
Early Milestones Colorado.....	50,000
East Central Kansas Economic Opportunities Corporation.....	5,000
East Newton R-6 Charitable Foundation, Inc.	6,500
Eastern Oklahoma District Library	3,500
Edgewood Center for Children and Families	1,000
Edmond Historical Society & Museum	2,500
Edmond Public Schools Foundation, Inc.	5,000
Edmond YMCA (Young Mens Christian Association).....	5,000

Elementary Institute of Science	100,000
Elm Springs Heritage Association	5,000
Emergency Infant Services	10,000
Emory University.....	138,710
Enactus	150,000
Environment Colorado Research and Policy Center, Inc.....	10,000
Environmental Law and Policy Center of the Midwest	350,000
Environmental Working Group.....	1,000
Equestrian Zone	2,500
Ernst & Young LLP.....	158,000
Eternity Fraternity Inc A Ministry of Faith	2,000
Eureka Springs Public Schools	4,000
Eureka Springs School of the Arts	2,000
Evergreen State College Foundation.....	10,000
Executive Service Corps of Central Oklahoma	2,500
Experimental Station	75,000
Fairview Rural Fire District, Inc.....	1,000
Family Promise of Shawnee, Inc.....	2,500
Family Resource Services of Lonoke, Inc.....	2,086
Family Self Help Center, Inc.....	2,500
Family Star, Inc.	20,000
Family YMCA of Bartlesville Association	5,000
Farmington High School	2,000
Farmington Public Schools - Farmington School District	10,000
Feeding America.....	1,250,000
Feeding, Inc.	5,000
Fellowship of Christian Athletes	20,000
Ferncliff Camp and Conference Center	10,000
Fields & Futures Foundation	5,000
Firehouse Hostel and Museum.....	2,500
First Call Alcohol Drug Prevention & Recovery.....	5,000
First Descents	158,000
Five and Dime Drama Collective.....	1,500
Flippin Elementary School	600
Flippin School District.....	2,000

Florence Crittenton Services of Colorado	20,000
Flying Hogs Aero-Club	6,000
Food Bank of North Central Arkansas Norfolk Community Care Program, Inc.	11,600
Forrester-Davis Development Center, Inc.....	5,000
Fort Collins Montessori School	20,000
Fort Smith Chamber Economic Development Foundation, Inc.....	67,000
Fort Smith Museum of History.....	5,000
Fort Smith Public Schools	3,500
Fort Smith Soccer Association dba Fort Smith Express Soccer Club	2,500
Fort Worth Art Association dba Modern Art Museum of Fort Worth	35,000
Fort Worth Chamber Development Foundation.....	30,000
Fort Worth Isd Education Foundation	3,500
Fort Worth Symphony Orchestra Association, Inc.	10,000
Fort Worth Zoological Association, Inc.	500,000
Foundation Center.....	179,460
Francis Tuttle Foundation, Inc.....	10,000
Frank Lloyd Wright Trust.....	250,000
Free Will Baptist Family Ministries, Inc.....	16,000
Freeman Health System.....	5,000
Friends of Arkansas Singletrack.....	15,834
Friends of Baker Prairie Association	500
Friends of Big Marsh.....	1,000,000
Friends of Lake Ouachita, Inc.	4,066
Friends of Marolt Park.....	1,000
Friends of the Chicago River.....	20,000
Friends of the Fort Sill, Inc.	5,000
Friends of the Lonoke Animal Shelter	4,000
Friends of the Palo Alto Junior Museum and Zoo	1,000
Friends of the Pryor Creek Library Inc.....	5,000
Friendship Community Care, Inc.	7,500
FSG, Inc.	25,000
Fuller Theological Seminary	10,000
Fundación Viento Sur	3,658,974
Gabriel's House, Inc.	5,000
Gaines House, Inc.	20,000

Garland County Habitat for Humanity.....	5,000
Gateway to Prevention and Recovery, Inc.....	5,000
Gathering Friends for the Homeless, Inc.....	2,500
Generation Schools Network	214,000
Genesis House, Inc.....	5,000
Gentry Public Schools.....	5,000
George Bush Presidential Library Foundation	10,700,000
Georgetown University	45,000
Gideons International	1,000
Girl Scouts - Diamonds of Arkansas, Oklahoma and Texas	19,000
Girl Scouts of Alaska	5,000
Girl Scouts of Colorado	2,000
Girls Incorporated of Metro Denver	5,000
Girls Shelter of Fort Smith Ark., Inc.	5,000
GivePower Foundation.....	507,555
Goblin Booster Club, Inc.	500
Good Samaritan Clinic.....	5,000
Gordon Cooper Technology Center Foundation.....	2,500
Gordon Parks Elementary School.....	5,000
Governor Dummer Academy.....	25,000
Grady Memorial Hospital Foundation	4,000
Graland Country Day.....	550,000
Grand Canyon River Guides, Inc.	10,000
Grand Canyon Youth	175,402
Grand Gateway Community Development Foundation, Inc.....	5,000
Grand Nation, Inc.....	1,000
Grand Valley State University.....	17,000
Grantmakers for Effective Organizations.....	58,000
Grantmakers in the Arts	10,000
Grayson County College Foundation Inc.....	5,000
Grayson County Shelter	2,500
Great Work Education Holdings, Inc.	6,000,000
Great Work Montessori School.....	275,000
Great Work, Inc.....	662,275
Greater Houston Community Foundation.....	150,000

Greater Kansas City Community Foundation..... 5,000,000

Greater New Orleans Development Foundation 25,000

Green Country Free Clinic..... 2,500

Greenland Public Schools..... 5,000

Greenwood High School 2,500

Grid Alternatives 157,500

Grove Community Playmakers, Inc. 5,000

Guadalupe Centers, Inc..... 5,000

Haas Hall Academy 697,000

Habitat for Humanity Greater San Francisco..... 10,000

Hackett Public School Education Foundation, Inc. 2,500

HackSchool 200,000

Happy Hill Farm Children's Home, Inc. 20,000

Harrison Chamber Foundation, Inc..... 3,000

Hearts Afire Foundation 2,000

Hearts and Homes of Arkansas, Inc..... 5,000

Helping Hands, Inc. 3,464

Heritage Foundation..... 5,000

Herring Gut Learning Center..... 10,000

High Country News..... 5,000

His Plans, Inc. 2,087

Hispanics in Philanthropy..... 15,000

Historic Preservation Alliance of Arkansas, Inc. 2,000

Honoring Americas Warriors, Inc. 5,000

Hoover Institution, Stanford University..... 45,000

Hope Center, Inc. 9,000

Hope Farm, Inc. 3,500

Hope Women's Shelter, Inc. 20,000

Horses for Healing, Inc. 122,000

Hospital Development Foundation, Inc..... 7,000

Hot Springs Advertising and
Tourist Promotion Commission..... 336,711

Hot Springs Documentary Film Institute 10,000

Houston Gateway Academy, Inc..... 100,000

Huitt-Zollars, Inc. 250,000

Huntsville School District 7,000

I Choose Hope, Inc. 1,000

IDEA Public Schools 1,311,200

Impact Oklahoma, Inc. 5,000

In Affordable Housing Corporation..... 2,500

Indaba Education Fund, Inc. 175,000

Independent Sector 15,000

Indigena Charitable Foundation, Inc..... 20,000

Inspiration Point Fine Arts Colony,
Inc. d/b/a Opera in the Ozarks..... 5,000

Institute for Humane Studies..... 40,000

International Community Foundation..... 50,000

International Mountain Bicycling Association 284,386

International Rescue Committee, Inc..... 500,000

Intervention & Crisis Advocacy Network, Inc..... 4,000

Invest in Kids..... 124,988

Isabel's House Crisis Nursery of the Ozarks 2,000

Jackson Hole Community School..... 22,500

Jay Public Schools Educational Foundation, Inc. 5,000

Jazz at Lincoln Center, Inc. 7,000

Jesus Was Homeless, Inc. 5,000

John Brown University..... 47,500

Johnson County Helping Hands, Inc..... 2,500

Jones Center for Families, Inc. 30,000

Joplin Business and Industrial
Development Corporation 5,000

Joplin Family Y..... 4,000

Junior Achievement of Arkansas, Inc. 10,000

Junior Achievement of Middle America, Inc..... 5,000

Junior Auxiliary of Rogers-
Bentonville Arkansas, Inc. 2,000

Justice Alma Wilson Seeworth
Academy Charter School Foundation 10,000

Juvenile Programs Foundation..... 4,000

K-Life Ministries, f/b/o K-Life of Harrison 2,250

Kansas City Community Gardens..... 5,000

Kansas City Kansas Public Schools..... 5,000

Kansas City Teacher Residency, Inc..... 405,001

Katherine and Ryan Palludan
Memorial Organization 1,000

Keystone Center..... 250,000

Kids of Our Heroes Adventure Camp	3,500
Kimbell Art Foundation	40,000
Kind at Heart Ministries, Inc.	5,000
KIPP Colorado Schools	459,119
KIPP Delta Public Schools	500,000
KIPP REACH Academy Charter School, Inc.	500,000
KIPP, Inc. aka KIPP Houston Public Schools	325,000
Kornerstone Program of Shell Knob Missouri.....	5,000
Lake County School District.....	250,000
Lakota Fund	5,000
Langston University Foundation.....	20,000
Lawndale Christian Health Center.....	150,000
Lawton Athletic Foundation, Inc.	5,000
Le Monde International School.....	325,000
Leadership Oklahoma, Inc.....	5,000
Leave No Trace Center for Outdoor Ethics	5,000
Lebanon R-3 School District	10,000
Leflore County Historical Society, Inc.....	1,500
Lessons for Life	4,000
Life Styles Foundation, Inc.	2,000
Lifepoint Fellowship.....	5,000
Lincoln Center for the Performing Arts, Inc.	50,000
Lincoln Public Schools	12,000
Lions of Arkansas Foundation, Inc.	4,000
Literacy Action of Central Arkansas, Inc.	2,500
Literacy Council of Benton County, Inc.....	10,000
Little Rock Chamber Foundation	20,000
Little Rock Technology Park.....	5,000
Little Scholars of Arkansas Foundation, dba LISA Academy.....	100,000
Living Coast Discovery Center.....	15,000
Loaves & Fishes Food Bank of the Ozarks, Inc.	5,000
Lucile Packard Foundation for Children's Health.....	10,000
Mabee-Gerrer Museum of Art, Inc.	3,000
Machik	146,838
Madison County Fair Association, Inc.	10,000
Madison County Sheriff's Department	3,000

Main Street Joplin.....	10,000
Marble Charter School, Inc.	4,000
March of Dimes Foundation	10,000
Marion County Community Services Inc.	1,500
Marion County Single Parent Scholarship Fund, Inc.	1,300
Massachusetts Museum of Contemporary Art Foundation, Inc.	250,000
Mayes County Hope Coalition.....	5,000
Mayo Clinic.....	100,000
McAlester Public Schools	17,500
Memorial Assistance Ministries	500,000
Mena Public Schools.....	5,000
Menlo School	10,000
Mercy Health Foundation Berryville	5,000
Mercy Health Foundation Joplin	2,500
Mercy Health Foundation Northwest Arkansas	20,000
Merlin and Nora Augustine Foundation.....	8,000
Met Cares Foundation, Inc.....	485,000
Metropolitan Arts Council of Greater Kansas City dba ArtsKC.....	5,000
Metropolitan Museum of Art	25,000
Metropolitan Youth Development- Education Foundation, Inc.....	10,000
Miami Public Schools Enrichment Foundation.....	5,000
Mid-America Science Museum	10,000
Midpeninsula Regional Open Space District.....	5,000
Mile High United Way, Inc.....	25,000
Milwaukee Collegiate Academy, Inc.	100,000
Mission Clinical Services.....	5,000
Mississippi First, Inc.	45,000
Missouri Colleges Fund, Inc.	5,000
Missouri Southern Foundation	2,500
Missouri State University Foundation.....	12,500
Monett Area United Fund, Inc. dba Barry-Lawrence Area United Fund	5,000
Monterey Bay Aquarium Foundation	10,000
Montessori del Mundo.....	43,500
Montessori Development Partnerships	745,000

Montessori Institute	220,000	National Wildlife Federation.....	300,000
Montessori Institute of Milwaukee, Inc.	165,000	Native American Journalists Association	10,000
Montessori Northwest	385,700	Neighborspace	165,000
Montessori Training and Research Center of Dallas dba Montessori Institute of North Texas.....	100,000	Neosho R-5 School District Charitable Foundation	6,500
Montessori Training Center of St. Louis, Inc.	500,000	Net Impact	75,000
Monument View Montessori Charter School	20,000	Nevada R-5 Foundation	10,000
Moore Norman Vocational Technical Foundation Inc dba Moore Norman Technology Center Foundation, Inc.	2,000	New Haven Home, Inc.....	99,964
Morgan Nick Foundation	3,000	New Heights Christian School.....	40,000
Mountain Grove Lions Foundation	5,000	New Hope Oklahoma, Inc.....	2,500
Mountain Home Bomber Boosters Foundation, Inc.	2,500	New Life Ranch, Inc.....	25,000
Mountain Rescue Aspen, Inc.	10,000	New Orleans Museum of Art.....	43,700
Mountain Village Montessori Charter School.....	40,000	New Start for Children and Families	2,500
Muldraw Public Schools.....	3,500	New Workforce Directions, Inc. dba Madison Strategies Group	10,000
Multicultural Alliance.....	10,000	New York and Presbyterian Hospital.....	250,000
Museum of Contemporary Art-Denver	90,000	New York Road Runners, Inc.	10,000
Museum of Discovery.....	2,500	Noel Betterment Association	4,000
Museum of Modern Art	38,000	Nonprofit Finance Fund	214,521
Museum of Northern Arizona Inc.....	10,000	Norman Public School Foundation	2,000
Muskogee County Child Advocacy Center, Inc.	5,000	Norman Regional Health Foundation.....	5,000
MVA Inc. aka Military History Museum.....	5,000	North Arkansas College Foundation, Inc.	500
National Alliance of Healthcare Purchaser Coalitions.....	15,000	North Arkansas Medical Foundation	2,000
National Association for the Advancement of Colored People.....	70,000	Northeast Benton County Volunteer Fire Department, Inc.	2,500
National Association of Hispanic Journalists	15,000	Northeastern Oklahoma A&M College Development Foundation, Inc.	7,500
National Audubon Society, Inc.	250,000	Northern California Public Broadcasting, Inc. KQED, Inc.	5,000
National Center for Family Philanthropy, Inc.	20,000	Northwest Arkansas Children's Shelter	1,000
National Christian Foundation, Inc.....	25,000	Northwest Arkansas Community College Foundation, Inc.....	11,000
National Committee for Responsive Philanthropy	50,000	Northwest Arkansas Food Bank, Inc.	5,000
National Congress of American Indians Fund.....	15,000	Northwest Arkansas Radiation Therapy Institute dba Hope Cancer Resources	5,000
National Council of La Raza.....	65,000	Northwest Arkansas Women's Shelter	25,000
National Gallery of Art.....	2,000,000	Nowata County Sheriff's Department.....	5,000
National Interscholastic Cycling Association.....	65,000	Nowata Senior Citizen Center, Inc.	5,000
National Museum of Women in the Arts, Inc.	30,000	Office of Human Concern.....	5,000
National Society United States Daughters of 1812	7,500	OK Mozart Inc.....	5,000
National Tax Limitation Foundation.....	1,000		

Oklahoma Centennial Botanical Garden, Inc.....	15,000
Oklahoma Center for Nonprofits, Inc.	10,000
Oklahoma City Public Schools Foundation, Inc.	10,000
Oklahoma Education Excellence Initiative, Inc.	250,000
Oklahoma Hall of Fame, Inc.	5,000
Oklahoma Public School Resource Center, Inc.....	2,363,699
Oklahoma State University Foundation	5,000
Oklahoma United Methodist Circle of Care Inc fbo United Methodist Childrens Home	5,000
Oklahoma Wesleyan University.....	5,000
Oklahoma Womens Coalition, Inc.	5,000
Okmulgee Main Street, Inc.	7,000
Olathe Public Schools Foundation	5,000
Old Jail Art Center.....	10,000
Olivewood Gardens and Learning Center.....	500,000
One To World, Inc.	25,000
OneStar Foundation	275,000
Operation Aware of Oklahoma Inc.....	5,000
Oral Roberts University.....	5,000
Ouachita River School District.....	2,500
Our House, Inc.....	10,000
Outreach International	5,000
Ozark Cycling Adventures.....	20,600
Ozark Guidance Center Inc.....	7,500
Ozark Natural Science Center, Inc.	76,366
Ozark Off Road Cyclists.....	408,641
Ozarks Medical Center Foundation.....	2,500
Pacific Charter School Development, Inc. (PCSD)	3,000,000
Pacific Crest Montessori School.....	136,500
Pagosa Peak Open School	47,000
Palo Pinto Challenge, Inc.....	5,000
PARK Foundation Inc.	5,000
Parker County Committee on Aging, Inc.	5,000
Partners Against Trafficking Humans	2,500
Party With a Heart, Inc.	2,500
Payne County Casa Association, Inc.....	2,500
Pea Ridge School District	13,500

Peninsula Open Space Trust	1,000
PeopleForBikes Foundation	269,483
Performing Arts Fort Worth, Inc.	2,700,000
Pervasive Parenting Center, Inc.	5,000
Petersen Automotive Museum Foundation	5,000,000
Peterson Outdoors Ministries.....	5,000
Philander Smith College.....	10,000
Philanthropy Roundtable.....	25,000
Philanthropy Southwest	17,500
Philbrook Museum of Art	10,000
Phillips Brooks School	5,000
Pittsburg County Habitat for Humanity.....	10,000
Pittsburg State University Foundation, Inc.....	5,000
Plant Chicago, NFP	135,000
Plant With Purpose	15,000
PlayForBurk Foundation, Inc.	3,500
Playing for Change Foundation	20,000
Police Athletic League of North Little Rock, Arkansas, Inc.....	3,500
Pope County Sheriff's Office.....	5,000
Positive Coaching Alliance	5,000
Postpartum Support International.....	113,696
Poteau Public Schools	5,000
Pottawatomie County Historical Society	5,000
Prairie Grove Public Schools	7,000
Preferred Family Healthcare	30,000
Presbyterian Children's Homes and Services	25,000
Presbyterian Church (USA)	57,283
Presbyterian Night Shelter of Tarrant County.....	20,000
Presbyterian Village, Inc.	10,000
Prescott College, Inc.	10,000
PT Hatfield Indonesia	264,624
Public Broadcasting of Colorado, Inc.	5,000
Ralston House	15,000
Randall G. Lynch Middle School Farmington School District	2,800
RARE.....	200,000
Ray of Hope Advocacy Center, Inc.....	5,000

Recovery Resources, Inc. 3,000

Recreational Aviation Foundation 40,000

Recycle Bikes for Kids, Inc. 5,000

Reform Alliance, Inc. 1,488,100

Regents of the University of California
f/b/o University of California, Merced..... 440,887

Regents of the University of Colorado..... 652,909

Regents of the University of Minnesota 120,000

Relay Graduate School of Education..... 200,000

Renewal Ranch 5,000

Responsive Education Solutions..... 187,233

Restore Hope, Inc. 25,000

Restored Life Services of Arkansas 5,000

Rhythm of Life , Inc. aka Drum Workshop, Inc. 1,000

Ricardo Flores Magon Academy, Inc. 25,000

River Parks Foundation 25,000

Riverside Park Conservancy, Inc. 25,000

Riverwind Foundation 16,000

Roaring Fork Public Radio, Inc. 1,000

Robin Hood Foundation..... 1,000,000

Rockbridge Montessori School 36,899

Rockefeller Philanthropy Advisors, Inc. 6,050,000

Rocky Mountain Children's Law Center 70,090

Rocky Mountain Institute..... 25,000

Rogers Public Schools 5,700

Rogers State University Foundation..... 5,000

Ronald McDonald House
Charities of Arkansas Inc. 2,500

Ronald McDonald House
Charities of Kansas City, Inc. 5,000

Ronald McDonald House Charities of
Oklahoma City, Inc. 2,500

Ronald McDonald House
Charities of the Four States 5,000

Rose Community Foundation 101,312

Safe Place, Inc. 5,000

Saline County Humane Society..... 4,000

Saline County Medical Foundation..... 5,760

Salvation Army Little Rock 2,500

Salvation Army National Corp. 1,250,000

Salvation Army Shawnee 5,000

Samaritan Counseling and Growth Center, Inc. 2,500

San Diego Natural History Museum 101,500

San Jose Children's Discovery Museum..... 1,000

Santa Fe South Schools, Inc. 500,000

Saville Center Inc. 2,500

ScholarMade Educational Services
f/b/o ScholarMade Achievement Place..... 680,000

School District of Raytown
Educational Foundation..... 5,000

Scissortail Community
Development Corporation 269,316

Sea Education Association, Inc. 10,000

SCORE International, Inc. 50,000

Seed Savers Exchange, Inc. 5,000

Sertoma, Inc. 2,087

Seven Hills Homeless Center 5,000

Shawnee Community Foundation..... 3,000

Shawnee Mission Education Foundation 5,000

Sheffield Place 5,000

Shell Knob School District..... 5,000

Shriners Hospitals for Children..... 10,000

Sigma Lambda Beta Education Foundation, Inc. 2,000

Silk Road Project, Inc. 79,100

Simmons Center Foundation 5,000

Single Parent Scholarship
Fund of Benton County, Inc. 4,000

Single Parent Scholarship Fund
of Northwest Arkansas, Inc. 5,000

Smarthistory, Inc. 150,000

Smithsonian Institution..... 550,000

Social Capital Markets LLC..... 30,000

Solutions Journalism Network, Inc. 50,000

Sonny Boy Blues Society Inc. 2,500

Sooners Helping Sooners, Inc. 5,000

Southeastern Council of Foundations, Inc. 9,600

Southern Bancorp Capital Partners d/b/a
Southern Bancorp Community Partners..... 20,000

Southern Christian Home	4,130	Team Up To Clean Up	10,000
Southwest R-5 School District	1,000	Teen Challenge of Oklahoma, Inc.....	8,000
Spark Community Foundation.....	9,637	Teen Challenge Ranch of Northwest Arkansas, Inc.	15,000
Special Forces Charitable Trust.....	25,000	Teen Court, Inc.	5,000
Spring Initiative, Inc.....	68,000	TEL Foundation	100,000
Springdale School District.....	4,000	Tenacity, Inc.	10,000
Springfield Catholic Schools.....	8,000	Teton Science Schools.....	47,504
Springfield Little Theatre Inc.	2,000	Texas A&M University-Kingsville.....	5,000
St. Francis de Sales Parish	40,000	Texas Ballet Theater, Inc.	10,000
St. Gregory's University	5,000	Texas Game Warden Association, Inc.....	1,000
St. Mark Baptist Church	5,000	Thaden School.....	325,000
St. Mary's Academy for the Sisters of Loretto.....	20,000	The Arc for the River Valley, Inc.	3,000
St. Paul's School.....	50,000	The Aspen Institute, Inc.....	240,605
St. Raphael Catholic Church	2,500	The Atlantic Monthly Group, LLC.....	400,000
St. Vincent Infirmary Development Foundation aka St. Vincent Foundation	10,760	The Board of Trustees of the Leland Stanford Junior University.....	160,000
Stand in the Gap, Inc.	5,000	The Builders Initiative, Inc.....	10,000,000
Stanford University.....	100,000	The CALL of Saline County.....	3,500
Star Rock Ministries	20,000	The Caring People.....	2,500
State Parks and Recreation Foundation of Arkansas	255,000	The Carter Center, Inc.	300,000
Stilwell Youth League Inc.	10,000	The Children's Learning Center, Inc.	300,000
StreetWise	65,000	The Children's Scholarship Fund	8,327,500
Studio Museum in Harlem, Inc.	6,666,666	The Colorado Museum of Natural History dba Denver Museum of Nature and Science.....	4,000
Subiaco Academy.....	10,000	The Communications Network, Inc.....	25,000
Summit Sovereign Grace Baptist Church, Inc.....	500	The Delfina Foundation	44,000
Susan G. Komen Breast Cancer Foundation, Inc.	20,000	The Exploratorium	2,000
Sustain dba FamilyFarmed.org.....	250,000	The Greenway Foundation, Inc.....	30,000
Sustainable Tulsa, Inc.	2,500	The Hopi Foundation.....	2,500
Symphony Orchestra of Northwest Arkansas.....	5,000	The Humane Society of the United States	15,000
Syracuse University.....	25,000	The Kempe Foundation.....	120,000
Tahlequah Public School Foundation	5,000	The Little Light House, Inc.....	5,000
Tailwind Aviation Foundation, Inc.	3,700	The Meloy Fund I, L.P.	450,000
Tarleton State University	17,275	The Mia Green Institute for Justice, Inc.....	5,000
Teach 4 all Mexico A.C.....	75,000	The National Center for Montessori in the Public Sector	400,000
Teach For All, Inc.	250,000	The National Cowgirl Museum and Hall of Fame, Inc.	120,000
Teach for America, Inc.....	2,925,750		
Team Africa Rising, Inc.	250,000		

The Nature Conservancy	724,775	Twin Lakes Literacy Council.....	1,000
The Nature Conservancy - Arkansas.....	29,311	UAMS Foundation Fund.....	74,000
The Nature Conservancy - California	5,000	Under Grace Ministries	30,000
The Nature Conservancy - Texas.....	25,000	United Cerebral Palsy of Central Arkansas, Inc.	5,000
The Nature Conservancy, Oklahoma Chapter.....	5,000	United Community Action Programs, Inc.....	3,000
The New America School	79,500	United Inner City Services.....	5,000
The Nueva School	10,000	United States Conference of Mayors	175,000
The Peel Compton Foundation.....	642,341	United Way of Northwest Arkansas, Inc.	85,000
The Redford Center	125,000	University of Arkansas.....	224,587
The Rising Star Missionary Baptist Church of Fort Worth Texas	25,000	University of Arkansas Fayetteville Campus Foundation, Inc.	2,029,000
The Sarara Institute	274,735	University of Arkansas Foundation, Inc.	1,446,687
The Steps, Inc.....	5,000	University of Baltimore Foundation	30,000
The Tech Museum of Innovation.....	1,000	University of California at Santa Barbara	1,873,008
The Trust for Hidden Villa	1,000	University of Central Arkansas Foundation, Inc.	2,500
The U C Davis Foundation	30,000	University of Colorado Foundation	102,133
Thea Foundation.....	35,331	University of Hartford	1,397,250
Third Sector New England, Inc., d/b/a TSNE MissionWorks	840,411	University of Oklahoma Foundation, Inc.....	12,000
Thomas Cole Historic House.....	50,000	University of the Ozarks.....	117,771
Thunderbird Clubhouse Board, Inc.....	2,000	University of Wyoming.....	10,000
TNTP, Inc. dba The New Teacher Project, Inc.	375,000	University of Wyoming Foundation.....	25,000
Top Flight Basketball Academy.....	1,000	Uplift Education.....	1,699,151
Town of Delaware	3,000	Urban Ecology Center, Inc.	255,000
Tri-State Family YMCA	7,000	Urban Land Institute -Oklahoma.....	28,375
Tricycle Theatre for Youth	3,000	Urban League of Greater Oklahoma City, Inc.....	15,000
Truman Medical Center Charitable Foundation.....	5,000	Urban Neighborhood Initiative Inc.....	5,000
Trust for Public Land	250,000	Urbanpromise International, Inc.	3,750
Trustees of Deerfield Academy.....	50,000	USA Cycling Development Foundation.....	25,000
Trustees of the University of Pennsylvania.....	10,000	Van Buren School District.....	2,000
Tulsa Area United Way	40,000	Van Buren School District Education Foundation, Inc.	2,500
Tulsa Ballet Theatre, Inc.	12,500	Van Cliburn Foundation, Inc.	50,000
Tulsa Community Foundation.....	2,500	Venture for America, Inc.	100,000
Tulsa Day Center for the Homeless Inc.	5,000	Vera Lloyd Presbyterian Family Services, Inc.....	184,500
Tulsa Girls Art School Project, Inc.	10,000	Victory Christian Center, Inc.	10,000
Tulsa Performing Arts Center Trust	10,000	Vine and Village	2,500
Tulsa Zoo Management, Inc.	10,000	Vinita Day Center, Inc.	4,000
Turn the Page KC.....	5,000	Wagoner Education Foundation, Inc.....	4,000

Wake Forest University	124,000
Walnut Farm Montessori School, Inc.	5,000
Walters Public Schools	5,000
Walton Arts Center Council, Inc.	5,000
Washington County Elder Care, Inc.	5,000
Washington Press Club Foundation, Inc.	10,450
Washington Regional Medical Foundation	10,000
Watered Gardens.....	5,000
Wave Academy	15,000
Wayfarer Foundation	10,000
Wayne County Community Foundation	25,000
WE-cycle.....	23,000
Weiner School Children's Endowment	20,000
Welcome Health	17,000
West Fork School District	7,000
West Plains Public Library.....	500
Western Arkansas Employment Development Agency, Inc.	2,000
Western Governors' Association.....	25,000
Westminster Public Schools	98,704
Westside Area Youth Organization	2,500
Westside Community Association of Bartlesville Oklahoma.....	5,000
Westville Little League Sports Association	1,000
Wildflower Foundation.....	600,000
Wildwood Park for the Arts, Inc.	2,500

William A. Farnsworth Library and Art Museum, Inc.....	15,000
Women in Government Foundation, Inc.	20,000
Women in the World Media LLC	175,000
Women's Bean Project	20,000
Women's Crisis Center of Taney County, Inc.	5,000
Womens Crisis Services of LeFlore County	1,500
Woody Guthrie Center, Inc.	5,000
World Affairs Council of Northern California.....	25,000
World Bicycle Relief NFP	10,000
World Monuments Fund, Inc.....	20,000
World Wildlife Fund, Inc.	68,250
Wright County Children's Home	1,500
Writers' Colony at Dairy Hollow, Inc.	2,500
Wyoming Agriculture in the Classroom.....	50,000
Yale University	100,000
Yell County Sheriff's Office.....	5,000
YES Prep Public Schools, Inc.	300,000
YMCA aka Ozarks Regional YMCA	3,000
Young Empowered Sisters (YES)	8,260
Young Life Foundation	10,000
Zest Education	75,000
Zoe Institute, Inc.....	5,000
Zoma Foundation	5,000,000
Zoological Society of San Diego	6,000

WALTON FAMILY
FOUNDATION

waltonfamilyfoundation.org



[@waltonfamilyfdn](https://twitter.com/waltonfamilyfdn)